

# WILDERNESS RECORD

California Wilderness Coalition

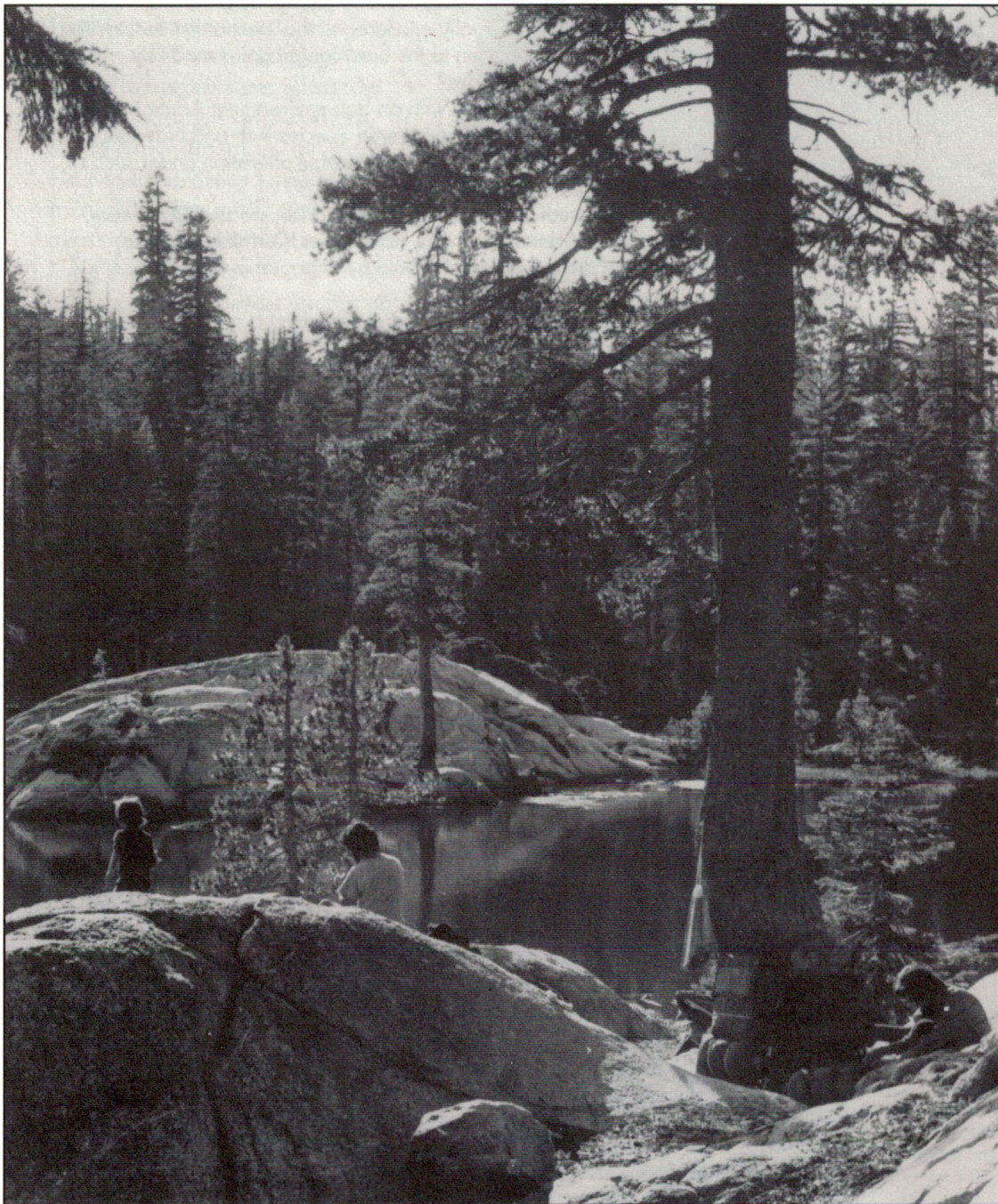
*A Voice  
for Wild  
California*



Fall 2000

Volume 25

Issue 3



Potential additions to the Carson-Iceberg and Mokelumne Wilderness areas are left vulnerable to off-road vehicle use under the draft Northern Sierra Amendment. For the story, see page 3. Pictured here: Bull Run Lake, Carson-Iceberg Wilderness.

## IN THIS ISSUE

- 3  
Humboldt-Toiyabe drafts a dangerous plan
- 4  
State of our species
- 6  
California Spotted owl
- 7  
Conference to map statewide linkages
- 8  
Wildlands Project: Sierra Nevada vision
- 10  
Sierra Nevada Framework: wildlife neglected
- 12  
Getting to know the natural world
- 15  
Wild Heritage Campaign reaches new areas
- 16  
Public demands stronger roadless policy
- 18  
BLM & ORVs in Napa Co. ACTION!
- 19  
Lassen National Park ACTION!
- 20  
Salmon & wilderness



**CALIFORNIA  
WILDERNESS  
COALITION**

2655 Portage Bay East, Suite 5  
Davis, CA 95616  
(530) 758-0380  
Fax (530) 758-0382  
e-mail info@calwild.org  
www.calwild.org

**Our Mission**

The California Wilderness Coalition defends the pristine landscapes that make California unique, provide a home to our wildlife, and preserve a place for spiritual renewal. We protect wilderness for its own sake, for ourselves, and for generations yet to come. We identify and protect the habitat necessary for the long-term survival of California's plants and animals. Since 1976, through advocacy and public education, we have enlisted the support of citizens and policy-makers in our efforts to preserve California's wildlands.

**Staff**

**Executive Director**

Paul Spittler, paul@calwild.org

**Conservation Associate**

Tina Andolina, tina@calwild.org

**Conservation Associate**

Chris Erichsen, chris@calwild.org

**Conservation Associate**

Gordon Johnson, gjohnson@c-zone.net

**Conservation Associate**

Ryan Henson, ryan@calwild.org

**Editor**

Laura Kindsvater, laura@calwild.org

**Bookkeeper**

Janice Stafford

**Membership and Development Associate**

Matei Tarail, matei@calwild.org

**WILDERNESS  
RECORD**

Fall 2000 - Volume 25, Issue 3  
ISSN 0194-3030

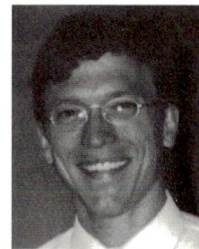
The Wilderness Record is published quarterly by the California Wilderness Coalition. Articles may be reprinted with permission from the editor. Articles, photographs and artwork on California wilderness, wildlife and related subjects are welcome. We reserve the right to edit all work.

Printed by Fox Print Specialists

**D I R E C T O R ' S R E P O R T**

**Where will we be come November?**

September has finally arrived and Congress is getting down to business: passing spending bills. This means only one thing for those concerned about our national forests: riders. Riders are policy measures attached to unrelated (and must-pass) spending bills. They are usually attached with little debate, and have been the modus operandi for Congressional Republicans (and a few Democrats) seeking to roll back environmental protections. This year's Interior Appropriations bill is loaded down with a grand total of 119 riders, mostly related to the environment.



Fortunately, the President has threatened to veto the Interior bill unless the objectionable language is removed. But what if the President did not hold the line? Worse, what if a Presidential Administration actually encouraged this mechanism for environmental policy reform? What would happen to the hard-fought gains made by conservationists over the past three decades?

An anti-environment Congress, matched with an anti-environment Administration, could be disastrous. The Wilderness Act, Endangered Species Act, and National Forest Management Act would face significant, unfavorable alteration under such a regime.

The simple answer to this predicament is one of avoidance: we should all work hard for pro-environment candidates and hope for the best. Certainly, anyone concerned about the fate of the environment should be engaged in November's critical election.

But as the past three elections demonstrate, the environment is not among the primary issues voters bring to the election booth. Like it or not, we don't control the elections. What will we do if the laws we have relied upon are laid to rest?

Even more pressing is the reality that laws alone will not preserve our natural heritage. California is home to more plants and animals than any other state, a whopping 5,653 native species. Of these, 32% are considered at risk (see page 4), and a majority of these imperiled species rely, in whole or in part, on privately owned lands. The Endangered Species Act (ESA) cannot adequately preserve many of these.

There are lots of reasons for this: funding shortages, molasses-like bureaucracies, etc. But another, critical, reason that species are failing to recover is that the ESA is viewed as a club by many private landowners. We cannot win under these conditions. We may change the laws, but until we change people's hearts and minds, our goal of preserving California's flora and fauna will remain elusive.

Many argue that the solution is to pass tougher laws. This approach is not only improbable—neither the ESA nor the Wilderness Act have ever been strengthened since their passage over a quarter century ago—it is also limited.

More regulation drives a further wedge between the landowner and the land, and encourages actions merely to comply with regulation, not to benefit the land and its inhabitants. As California's declining species show, this approach is limited.

To increase protection for California's flora and fauna, we need to strengthen the relationship between the landowner and the landscape. We need to make habitat protection a net plus, rather than a net minus—by creating a climate where providing habitat is a benefit, rather than a liability.

How do to this? First, by recognizing the role private landowners have in protecting and managing California habitat. Second, by recognizing the limits of regulation. Finally, by creating incentives for positive habitat management on private land.

These changes will not come from Congress. They will not come from the political sphere at all. These changes will come from forming bonds with the individuals who manage California's habitat—by understanding their concerns and fears, and by making a good faith effort to maximize the benefits of habitat conservation.

When we begin to accomplish these things, we are on our way to changing minds. Our victories will transcend political change, as they will stem from the hearts of those who manage California's most precious natural resource: our habitat. The task may be a daunting one, but will be well worth it. We look forward to sharing it with you.

# Northern Sierra Amendment leaves 10 potential wilderness areas open to off-road vehicle use

by Marge Sill

**A** major planning effort is underway just south of the Tahoe Sierra that could dramatically rewrite management policies for tens of thousands of acres of wildlands.

The Humboldt-Toiyabe National Forest spans over a million acres in eastern California and Nevada. Forest managers have released a draft plan, called the Northern Sierra Amendment to the Humboldt-Toiyabe Land Management Plan, for public review. The plan's preferred alternative would leave 9 of 10 potential wilderness areas in California vulnerable to motorized vehicle use. Approximately 25,000 of those acres are currently closed to motorized vehicles.

56,000 acres of the southern portion of the forest, termed the Alpine Management area, are currently still undeveloped. The preferred alternative, if enacted, would mean that a total of 45,000 acres of these wildlands are at risk. Conservationists have vowed to fight the proposed changes, setting up a showdown over the fate of some of California's most pristine remaining wildlands.

The Forest Service analyzed five alternative management strategies in the amendment. The



Tom Hillard

**This potential addition to the Carson-Iceberg Wilderness could be opened to off-road vehicle use unless the Northern Sierra Amendment is strengthened.**

alternative that the Forest Service prefers would prohibit off-road and other motor vehicles on 54% of the Humboldt-Toiyabe National Forest. The remainder of lands, particularly those in California, would be open to motorized vehicle use. In addition, the

Forest Service is considering expanding downhill ski areas adjacent to the existing ski areas at Mount Rose.

The alternative favored by the conservation community is Alternative A, which offers the most protection from off-road vehicle (ORV) use, and focuses on preserving and enhancing the scenic quality of these lands. This

alternative's main emphasis is on protection of the watershed and water quality. Under Alternative A, a total of 59% of the

land would be closed to off-road vehicles. Unfortunately, Alternative A would also allow the remaining 41% to be open to ORVs and other vehicles. Snowmobiles would be emphasized in the Blue Lakes, Willow Creek, and Scotts Lake areas, and allowed in four other areas as well, including an area adjacent to the Mount Rose Wilderness!

Alternative A needs to be strengthened. All roadless areas should be managed so that they can qualify for wilderness designation in the next round of Forest Planning beginning in 2002. This is particularly important in Alpine County, which includes the Carson-Iceberg additions, the Mokelumne additions, and the Freel Peak area.

Public comments were due on the proposed Amendment by August 31, 2000. Hopefully, the Forest Service will respond to conservationists' concerns by adopting as well as strengthening Alternative A. Stay tuned for future updates.

**Marge Sill is known to many as the "mother of wilderness." She has been working to protect Eastern Sierra and Great Basin habitats for over 50 years. She lives in Reno, Nevada.**

**Alternative A is the strongest conservation alternative, but still needs strengthening. All roadless areas need to be managed so that they can qualify for wilderness designation.**

# The State of California's species

by **Jessie Smith**  
and **Laura Kindsvater**

**C**alifornia is an amazing place, home to an astonishing diversity of plants, animals, and habitats. It is also home to 34 million people. The state's population has grown by over one half million each year in the last three years, and the state's department of finance recently predicted that California's population will increase to 60 million people over the next 40 years.

Given the continuing influx of people to our state, we need to look at how our environment is faring. How well are we currently responding to development pressures? How are the plants and animals who share this land with us faring? Where are threatened species most likely to be found? Are public lands, such as our national forests or Bureau of Land Management land, sufficient to provide the habitat that these species need?

## California's species richness

California is home to an impressive 5,653 native species of plants and animals, more than any other state. Approximately one quarter are found nowhere else on Earth. California also leads the nation in rare or at-risk plants and animals with 1,815 species, approximately 32% of California's biota. Hawaii is the only other state with a higher percentage of threatened species; it has 811 at-risk species, which is 60% of its plants and animals.

## So why are we so lucky?

Why is California so rich in species? The third largest state in the nation (159,000 square miles), California is extremely geologically, topographically, and climatically diverse. Soils with unusual chemical and physical properties contribute to California's high biodiversity. For example, there are 215 species that are restricted to or closely



**California ecosystems that are currently not well protected include oak and most other hardwood woodlands, coastal scrub types, grasslands, most riparian woodlands, conifer types of the north coast including redwoods, and closed pine or cypress forests.**

related to "serpentine" soils. Serpentine soils are made up of high concentrations of magnesium, chromium, nickel and other heavy metals that are usually toxic to most vegetation.

Glaciation during the Pleistocene (a period of time one to two million years ago) is also thought to have contributed to California's species richness. Drying of lakes in the Great Basin at the end of the Pleistocene resulted in the isolation of fish populations. The smaller lakes, separated from each other for millions of years, became the home of new species of pup fishes and trout.

Sharp changes in topography also create a wide variety of niches in which a diversity of species can flourish. The most extreme gradient in the state can be found in eastern California, where within 80 miles, elevations descend from 14,494 feet at the summit of Mt. Whitney to 282 feet below sea level at Bad Water in Death Valley.

The climate in California is warmer than in many other states. Warmer climates are conducive to the develop-

ment and persistence of a greater number of species. The Pacific air-stream also interacts with the state's various mountain ranges, creating highly regionalized weather patterns.

## Plants found nowhere else

Surprisingly, California has a low number of plant families (140 families, the same number as New Jersey). There is, however, a part of California—that portion west of the Sierra Crest—that has a large number of "endemic" plants. "Endemic" means that these plants are only found in California. Nearly 50% of the plants native to this part of California are endemic, which is extremely unusual; this is one of the highest levels of continental endemism in the world. Many of these are highly localized due to the Mediterranean climate and complex physical environment.

## Frogs in decline...could be a sign

California is also home to 17 endemic species of amphibians. This number

includes abundant species such as the California newt as well as very rare and localized species like the limestone salamander, found only on a small stretch of the Merced River below Yosemite National Park.

More than a quarter of amphibian species in California are rare. Due to the fact that frogs have permeable skin and are in close contact with water during key parts of their life cycle, a widespread decline among frogs, such as the California red-legged frog, could be a signal of broader ecosystem health problems. Amphibian decline and deformity may be due to poor water quality, habitat loss, increased ultraviolet radiation due to the depletion of the ozone layer, man-made contaminants including those that mimic natural hormones, introduced species (e.g. exotic species of trout in the High Sierra preying on frog young), or climate change.

### Fish in hot water

Northern California and Southern Oregon both have high levels of fish species found nowhere else in the world. Forty-four percent of California's fish species are at risk of extinction. Salmon and steelhead stocks have declined dramatically: a minimum of 214 salmon and steelhead stocks in 7 different species are at risk of becoming extinct. Another 106 populations have already disappeared.

California has the highest level of endemic vertebrates in the nation (62 species), followed by Hawaii (57), then Texas (36).

### Where are endangered species found?

In California, the U.S. Forest Service considers 410 species of plants and animals to be "sensitive" or species of concern. Yet, fully 1,815 of California's species are considered rare or at-risk, according to a report recently released by the Nature Conservancy. Thus, if both estimates are correct, over 75% of California's at-risk species are not dependent on our national forests.

Some may be dependent on BLM or other government-owned lands; however, many of these species are dependent on privately owned lands for their survival. In California, lower-elevation and coastal ecosystems are primarily found on private land, and only a small portion are protected in nature reserves. The ecosystems that are currently not well protected by wilderness or park status in California include coastal scrub types, grasslands, most riparian woodlands, most hardwood woodlands, conifer types of the north coast including redwoods, and many closed pine or cypress forests.

### The role of private land conservation

Clearly, the role of private landowners in protecting habitat is critically important. New policies and incentives



**Thirty-two percent of California's plants and animals, like this desert tortoise, are considered at risk. Public lands provide a valuable refuge for some of these species, but working with private landowners will be critical to their survival.**

must be developed that will encourage conservation on private land. In 1999, Colorado, Delaware, Virginia and Connecticut all passed laws that provide tax incentives for conservation. In Colorado, gifts of conservation easements are now rewarded with a state income tax credit of up to \$100,000. In Delaware, gifts of lands or easements for open space, natural resource, biodiversity, or historic preservation purposes are rewarded with a state income tax credit of up to \$50,000. Virginia and Connecticut both created

two types of incentives: (1) a tax credit for gifts of easements or land for conservation or watershed protection, (2) an exclusion from state income tax for the gain on sales of land for conservation. At press time, California was on the verge of passing a tax credit for private land gifts to non-profit organizations and government agencies.

### Public lands are important

Although private lands harbor the majority of California's imperiled species, the contribution that public lands make to preservation of California's biodiversity cannot be ignored. And of the 410 species of concern living in California's national forests, many are dependent upon roadless areas for their survival.

Nationwide, over 45% of threatened, endangered, and proposed species that have habitat on or affected by national forest lands are directly or indirectly affected by inventoried roadless areas. This percentage represents approximately 20% of all animal species and 11% of all plant species listed under the Endangered Species Act within the United States. Over 60% of all Forest Service sensitive species are directly or indirectly affected by inventoried roadless areas.

Public lands such as our national forests make an important contribution in providing habitat for plants and animals. However, the majority of California's species rely in whole or in part upon private lands. The challenge that environmentalists now face is learning how to best collaborate with private landowners. We must be innovative, flexible, and sure of our priorities as we search for common ground.

**Jessie Smith is a California Wilderness Coalition intern. Laura Kindsvater is the CWC's editor. Information for this article was compiled from *Precious Heritage: The Status of Biodiversity in the United States*, the *California Gap Analysis Report*, the *Forest Service Roadless Area Conservation draft Environmental Impact Statement*, the *Jan./Feb. issue of Common Ground*, and the *California department of finance's web site*.**

# California Spotted owl at risk on private lands: hardwood protection crucial in Sierra

by **Chris Erichsen**

**C**urrent private land management strategy is ineffective in protecting the threatened California Spotted owl in the Sierra Nevada. As the owl population dwindles to precarious levels in the Sierra, absence of protection on private lands, particularly in areas adjacent to public lands, poses an added threat to critical owl habitat.

The California Spotted owl is a subspecies of the Northern Spotted owl. The Northern Spotted owl occupies a range extending from the Cascades and Klamath southward along the coast through Marin County. The California Spotted owl occupies a range extending from the Cascades in lower Shasta County south along the Sierra Nevada to coastal mountains in the central and south coasts. Both species make use of hardwood forests seasonally, as they share a common prey, the woodrat. Both species have suffered population declines in recent decades due to habitat loss.

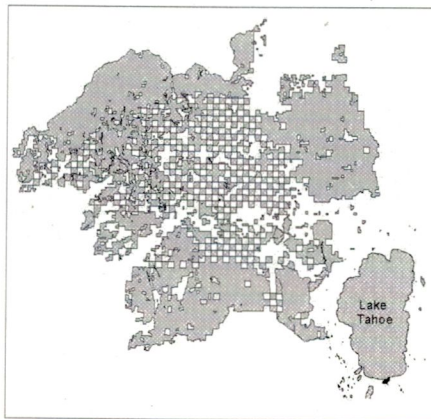
Along the western slope of the Sierra Nevada, lower elevation oak woodlands are known to provide the California Spotted owl with important habitat. These lower elevation areas provide wintering habitat for the owl, which is known to migrate during the fall from old growth mixed-conifer forests.

Public lands such as national forests account for approximately 50% of owl habitat in hardwood forests on the Sierra Nevada west slope. What remains lies on privately owned lands and is subject to county plans and development interests. Of the foothill woodland habitat, only 4.2 percent is managed as reserves or for natural values.

Private timber corporations in the central Sierra control potential owl habitat in mature pine forests. Figure 1 shows the checker-board pattern of land

ownership in the central Sierra: the gray sections are owned and managed by Tahoe National Forest; the white sections are privately owned. A large extent of the privately owned land in the central Sierra is owned by the nation's second largest private landowner, a timber corporation known as Sierra Pacific Industries. How many spotted owl nests are within Sierra Pacific forests is unknown.

A recent scientific study of the California Spotted owl population in the Sierra did not consider potential owl habitat on private lands nor did it assess the impacts of private land management on neighboring owl



**Figure 1. The checkerboard pattern of public and private land ownership in the central Sierra**

habitat on public lands. Without such biological knowledge on owl vulnerability to different land ownerships, the situation is analogous to protecting just half a bird. If our agencies intend to save the California spotted owl, its habitat on private lands must be identified and protected.

This issue of spotted owl protection on private lands is by no coincidence reliant upon an equally vital issue, protecting oak ecosystems. In the Sierra westside foothills, oaks on private lands are harvested for timber, and are also in

steady decline from residential development.

There are no measures or incentives in county plans to protect owls or their habitat on private lands. This may be reflection of the owl's lack of protection at the state level. Because the California spotted owl is not a state-listed species, its habitat is not subject to the California Environmental Quality Act (CEQA), which requires developers to assess potential impacts on listed plant or animal species.

However, a petition to list the California Spotted owl was recently filed by with the Fish and Wildlife Service by the Sierra Nevada Forest Protection Campaign, Center for Biological Diversity, and Natural Resources Defense Council. If the listing is approved, the Fish and Wildlife Service is required to develop a recovery plan for the California Spotted owl. The recovery plan is supposed to include an analysis of the owl's habitat needs and a plan to make sure that that habitat continues to exist.

Typically, recovery plans take years to develop. For many species that have already been listed under the Endangered Species Act, recovery plans have yet to be written. Thus, listing the owl as threatened or endangered under the Act is not a guarantee of its survival.

It is possible that the listing could help to generate the support needed for research on the owl's dependency on both public and private land. Currently, the relationship between the California Spotted owl and its habitat on private land is poorly quantified by resource agencies and planners. Owls and their habitat on private lands, especially in the Sierra foothills, will require research and direct protection from development in the immediate future.

**Chris Erichsen is the coordinator of the California Wildlands Project.**

# Conference will map critical habitat linkages for entire state

by **Kristeen Penrod**

**A**n unprecedented event will be taking place on November 2nd, 2000—a statewide conference that will bring together California's top scientists to identify and prioritize key habitat linkages throughout the state. The event, "Missing Linkages: Restoring Connectivity to the California Landscape," is being co-sponsored by the California Wilderness Coalition, The Nature Conservancy, and the Biological Resources Division of the U.S. Geological Survey. The Center for Reproduction of Endangered Species will be hosting this exciting event at the San Diego Zoo.

An abundance of scientific research has been directed at the function of wildlife corridors. Connectivity has been shown to significantly increase the ecological integrity of fragmented islands of habitat. Wildlife corridors are now acknowledged as a critical component to the restoration and preservation of healthy wildlife populations. If managed properly, these linkages can significantly increase the chances of survival for many large, wide-ranging wildlife species. The large habitat requirements of these species ensure that if reserves are set aside for them, an array of other listed and sensitive flora and fauna will also be protected.

In the face of increased habitat fragmentation, access to the best information is crucial for land managers, conservation organizations, and others working to preserve biodiversity. Despite advances in conservation planning, there is still no mechanism for land manag-

ers, policy-makers, scientists and conservationists to share information about the locations of corridors or about the importance of protecting connectivity. Thus, many corridors are being destroyed, simply because land managers do not know they exist.

Unfortunately, there has been little statewide effort in California to identify, examine, and protect wildlife corridors. In some cases, local or regional reviews have been completed and the results documented. In other cases, the locations of critical corridors remain hidden in the archives of "local knowledge" and therefore do not influence public policy and land use decision-making. The intent of the Missing Linkages conference is to address and rectify this problem.

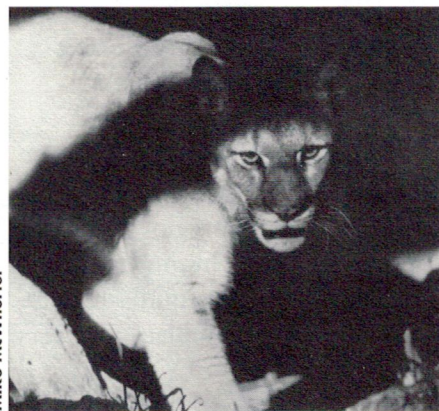
The strategy of the conference is to bring together renowned conservation biologists and key scientists and land managers from each ecoregion to intensely focus on California's connectivity issues. The conference will be broken into two segments. The first section will include presentations by Michael Soulé, Paul Beier and Kevin Crooks on the importance of corridors, a review of the literature and of California studies. The second segment will be a working session in which participants from each region utilize their local knowledge to identify the missing links in their ecoregion of expertise.

Ecoregional chairs have been selected from each region to help gather the latest information, identify base maps and data layers needed for the sessions, and help

facilitate the process of identifying California's habitat linkages. By the end of the day, we hope to have identified the key wildlife corridors throughout the state. Finer scale analyses and further iterations of the state-wide map generated will be required, but the information gathered at this event will certainly be a step in the right direction.

The result of the conference will be a statewide map that shows the locations of the most important and threatened corridors for California wildlife. This map, along with the accompanying conference proceedings, will be published and used as an educational, planning and advocacy tool and will be distributed to land planners and managers throughout California.

**Kristeen Penrod is the coordinator of the South Coast Wildlands Project and the Missing Linkages conference. She can be reached at (626) 932-1484 or at kristeenpenrod@hotmail.com.**



Mike McWhorter

**A small population of mountain lions requires at least 1000 to 2200 square kilometers of habitat to survive for 100 years, a study by Paul Beier has shown. Dr. Beier will be one of the presenters at November's connectivity conference.**

# A Wildlands vision for the Sierra Nevada

By Chris Erichsen

**A** plan to rewild the Sierra Nevada bioregion has been drafted by the California Wilderness Coalition and is presently being reviewed by a team of scientists. This first proposal for the Sierra identifies a network of core areas and habitat linkages for six native species: California spotted owl, wolverine, mule deer, Pacific fisher, marten, and gray wolf. Threatened oak habitats of the Sierra's west-slope were also mapped, and are part of the Wildlands network.

Wildlands planning addresses what conservation biologists refer to as the *ecological wounds* of the land. Ecological wounds are human-imposed injuries to the land such as (a) removal of habitat, (b) fragmentation of habitat, and (c) loss of species.

A Wildlands vision proposes a remedy to these ecological wounds in a conservation strategy called *rewilding*. Rewilding is a unique, science-based approach to protecting large landscapes by restoring wildlands, large predators, and natural processes. It is a set of principles that provide a big picture view for long-term protection and maintenance of ecoregions, such as the Sierra Nevada. In much of North America, rewilding requires restoration of carnivore populations, rivers,

and watersheds. A landscape that has been rewilded would be much the same as it was 60-100 years ago.

Rewilding is a set of principles used to heal ecological wounds over the course of 50 to 100 years. An example from the Sierra plan is our proposal for restoring top predators to the Sierra by protecting large blocks of habitat and linking them together. For more on rewilding, see the spring and summer 2000 issues of the *Wilderness Record*.

One of the most drastic ecological wounds of the Sierra is the continuing loss of native carnivore species. Carnivores are known to play critical ecological roles, like controlling the population sizes of herbivores. The Sierra has lost the gray wolf and grizzly bear populations it once supported. In recent decades, we have seen the disappearance of the wolverine, considered an indicator of wilderness. Now the Pacific fisher and California spotted owl are at the brink of extinction.

The Sierra Nevada may appear wild and majestic, but from an ecological perspective, it is in jeopardy: loss of habitat from development and poor forestry practices are modern-day threats to many species. Saving and restoring indigenous carnivores to the Sierra will require the establishment of new, larger, and connected reserves. Identifying these areas as well as sites for habitat restoration are goals of the Sierra Wildlands plan.

There are no ready-made formulas for identifying wildlife corridors. Needless to say, it is a difficult task and is one that has not been addressed by other plans for the Sierra. Habitat connectivity is a core goal of the Sierra Wildlands Project.

The Sierra Wildlands proposal

recognizes that different animals have different habitat and mobility needs. Travel corridors for six species were identified and included in the Sierra plan. Figure 1 broadly identifies regional connectivity needs for these species for their long-term survival (400+ years). We are currently refining our knowledge and mapping of these corridors.

Another unique challenge of the Sierra Wildlands plan is to connect the privately owned oak woodlands of the west-side foothills to old-growth pine forests on public land. A planning process developed for this purpose identified a network of conservation sites, including remaining roadless areas, intact oak woodlands, and critical habitat for the California Spotted owl and mule deer. This Wildlands network for the Sierra foothills connects to higher elevation habitat for the spotted owl and Pacific fisher.

Development pressures are greatest in the Sierra's foothill region, as population levels are expected to double or even triple in the next 40 years. Refinement of our planning in the foothills will involve more detailed mapping, especially of spotted owl habitat.

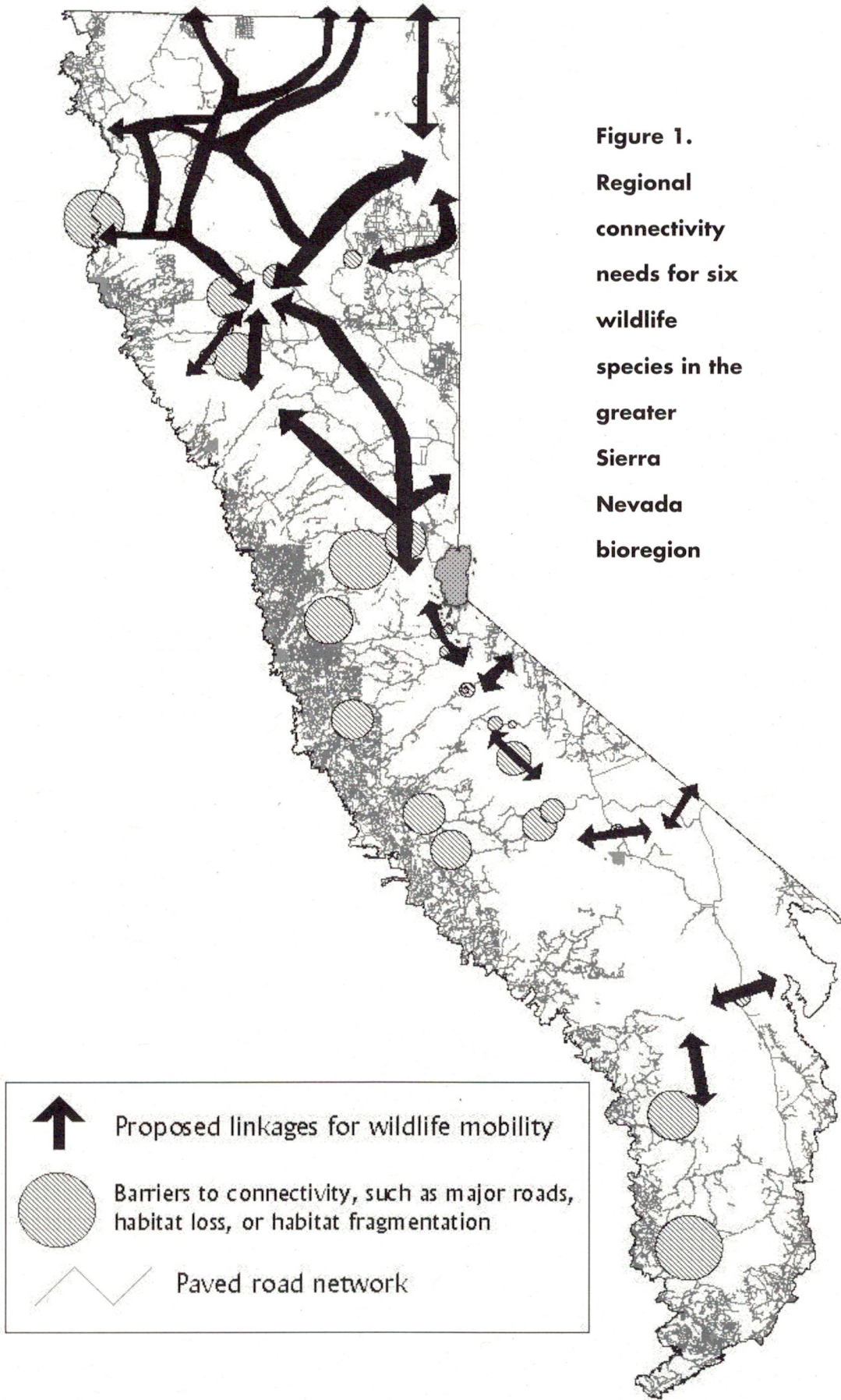
Our planning for this project began in September 1999. Since then, numerous individuals and organizations have contributed untold hours of counsel and information to the Sierra planning process. We will continue to refine the science of the Sierra Wildlands vision and present our first proposal to our conservation partners and the public this fall.

**For further information on the Sierra Nevada Wildlands Project, contact Chris Erichsen, California Wildlands Project coordinator at (530) 758-0380 or [chris@calwild.org](mailto:chris@calwild.org).**



Heron Dance

**Figure 1.**  
**Regional**  
**connectivity**  
**needs for six**  
**wildlife**  
**species in the**  
**greater**  
**Sierra**  
**Nevada**  
**bioregion**



# Public demands a stronger plan for Sierra Nevada's wildlife

by Ryan Henson

**T**he Forest Service's draft management plan for the national forests of the Sierra Nevada and Modoc Plateau was released in April, 2000. After years of work and a couple of false starts, the Forest Service circulated eight proposed management plans for public comment. Two of those plans (Alternatives 6 and 8) are the agency's "preferred options." While conservation groups welcomed the effort to better manage the Sierra forests, they did not endorse either of the preferred alternatives when the public comment period closed in August. Indeed, the plan led to a deluge of oral and written comments demanding that the Forest Service improve its plan.

At a recent meeting in Sacramento, the Forest Service would not accept public comments, so conservationists organized their own hearing in the same hotel. After the alternative hearing, activists gave the Forest Service over 30,000 postcards from 51 countries and all 50 states asking that the plan be improved.

Most comments opposing the

plan contended that Alternative 6 does not offer enough protection for old-growth-dependent species such as the California Spotted owl. As one concerned citizen stated, "A plan that largely continues the status quo cannot help these species."

The activities planned by the Forest Service under Alternative 6 will not lead to the outcomes projected by the agency. For example, the agency projects that spotted owl populations will increase, but cannot point to specific actions that will actually make this happen.

Alternatives 6 and 8 do not provide a real strategy to ensure the recovery of the California Spotted owl. Instead, the alternative simply describes how many trees will be left standing per acre, the amount of forest canopy that will be left as shade per acre, etc. without an admission that these guidelines are largely untested and may not accomplish their intended goal.

Logging can greatly diminish the quality of suitable spotted owl nesting habitat. Given that the latest

owl demographic studies show an alarming downward trend, a conservative approach must be used to maintain and restore owl habitat. The California Spotted owl is at greater risk of extinction today than the Northern and Mexican Spotted owls were before they were listed as endangered species under the Endangered Species Act.

It is possible, particularly under Alternative 6, that mid-size trees could be heavily logged since the removal of large trees is prohibited and small trees are not economically worth removing. This is especially of concern in the eastern Sierra and the Modoc National Forest, where even a mid-size tree is often a rarity and represents the best hope of restoring ancient forests to these regions. Under Alternative 6, the worst case scenario is that only very small trees and trees over 30 inches in diameter (24 inches in diameter in the eastern Sierra and Modoc Plateau) will remain in logged areas, meaning that when older trees die there will be a "habitat gap" before younger trees get larger.

Alternatives 6 and 8 provide no real recovery strategy for the Pacific fisher, a member of the weasel family considered greatly imperiled by many biologists. This is especially important given that conservationists have proposed that the fisher be listed under the Endangered Species Act.

Local managers are given too much discretion in how they implement the plans outlined in alternatives 6 and 8. In the name of experimentation, the Forest Service is allowed to occasionally change the

**The Forest Service must improve its plan by providing a strong recovery strategy for imperiled wildlife such as the mountain yellow-legged frog (pictured here), Yosemite toad, Pacific fisher, and California spotted owl.**



Roland Knepp

rules to find a better way to achieve similar conservation goals. Unfortunately, in the experience of most conservationists, any habitat protection loophole is often exploited by the Forest Service to the point that it becomes the rule rather than the exception.

The economic impact modeling in the plan takes a myopic view of the positive and negative economic impacts of the various alternatives. As is often the case, the impact analysis focuses primarily on logging.

However, tourism and recreation offer many more jobs than logging and mining. As the *Wall Street Journal* reported last August, "logging contributes little to today's Sierra economy." And when forests are healthy, watersheds are too, and water is the single most valuable economic commodity in the Sierra.

Environmentalists concerned about the fate of the Sierra's wildlife support the adoption of Alternative 5. Now the Forest Service must decide which alternative plan it will

follow, and how to incorporate the public's concerns about poor recovery strategies for imperiled Sierran wildlife such as the Yosemite toad, mountain yellow-legged frog, Pacific fisher, and California Spotted owl. The final version of the Forest Service's plan will be released in a few months. Stay tuned to the *Wilderness Record* for the latest developments.

**Ryan Henson is a Conservation Associate for the California Wilderness Coalition.**

## Los Alamos fire makes burn policies even more complex

by Ryan Henson

**F**ire is inevitable on every acre of California grassland, chaparral, and forest. In fact, occasional fires are necessary to keep these ecosystems healthy. Yet, since the early part of the last century, the federal and state governments have made wildfire suppression one of their primary duties and have helped shape the public's opinion of fire through Smokey Bear and other education programs. Ironically, every time a small, creeping fire is suppressed the government is guaranteeing that the next blaze will be larger, faster, and unnaturally destructive. Some scientists argue that fire suppression has been as destructive to our forest ecosystems as logging.

One way for federal agencies to both reduce dangerous fuel levels and maintain the health of fire-dependent ecosystems on public lands is to use "prescribed fire," which used to be known as "controlled burns." These intentionally set fires are supported by most conservation groups, but they are often misunderstood by a public that has been taught for decades that all fires are bad. The use of prescribed fire is governed by an elaborate set of rules: fires can be lit and are allowed to continue burning only under extremely precise weather conditions. If these weather conditions change in even the smallest way, firefighters and heavy equipment (already on site) are used to suppress them.

Occasionally, prescribed fires get away from federal agency staff and become wildfires. Last year, the Bureau of Land Management was burning an area infested with the invasive weed star thistle in Trinity County, California. The BLM had chosen a prescribed burn strategy in part because conservationists had objected to the use of herbicides. Winds increased and the fire got out of control, destroying dozens of homes on nearby private land. On May 5, 2000, the National Park Service lost control of a prescribed fire in Los Alamos, New Mexico. The fire burned many homes and businesses, threatened the Los Alamos National Laboratory (where the atom bomb was developed) several times, and was not contained until May 28. In both the Trinity County and Los Alamos fires, agency personnel were not following standard guidelines. As a result of the Los Alamos fire, prescribed fire programs were suspended on all public lands for several weeks.

The moratorium has been lifted, but the political backlash continues. Some members of Congress have even sought to eliminate prescribed fire programs altogether. Meanwhile, conservationists and federal agencies still seek to increase the size and frequency of prescribed fires to reduce unnaturally high fuel accumulations and to maintain the health of fire-dependent ecosystems. Every time a prescribed fire accidentally becomes a wildfire, this cause is set back significantly. Meanwhile, natural fires continue to be suppressed, and fuels continue to accumulate.

# Having a conversation with the natural world

by Bob Anderson

**W**hy is it that poll after poll shows a majority of Americans identify themselves as concerned about the environment, yet public policies rarely reflect this? A possible answer is that while people generally understand the need for environmental protections, they don't have direct, firsthand connections to the environment. Why crusade to limit logging in fragile forest ecosystems, support energy efficiency in machinery, appliances and automobiles, or develop a sustainable economy when these don't appear to affect us today, tomorrow or even next year? Without immediacy, it is all too easy to miss the connections and to leave these issues to others.

Ultimately we doesn't make these connections because we don't *know* the natural world beyond the cocoon erected by our technological society. How many of us know a forest, understand the deep interrelationships between the land, plants and animals? How many of us follow the phases of the moon, are dependent on knowing the seasons or have ever been in a truly wild place?

Most of us don't have any dependency on or interest in these and countless other things related to nature. We go through life like a person at night following the beam of a flashlight, never knowing what is beyond the boundaries of the light. This hasn't always been true. Until quite recently (the last several hundred or thousand years depending on how it is measured), our survival depended on a knowledge of the natural environment in which we lived.

Today most of us think this legacy is

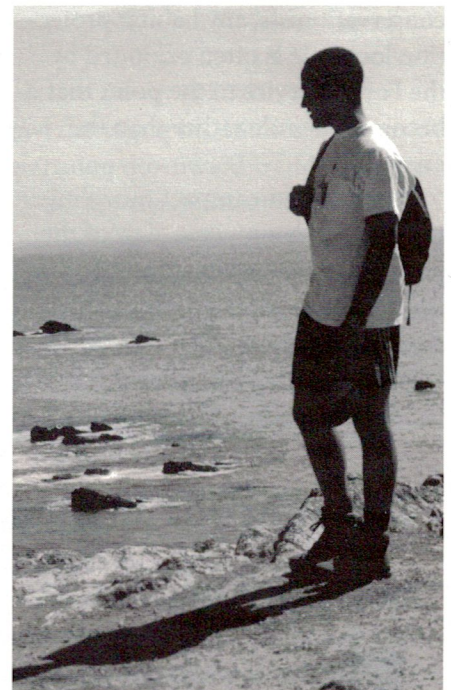
history with little relevance to modern times. Such a view rests on shaky ground, for in the final analysis we must create an existence compatible with our surroundings. Does anyone really think we can indefinitely exploit and mine the oceans, the land and other life forms without regard for the long-term consequences? Can anyone possibly believe it is safe to endlessly dump man-made chemicals and pollutants into the earth's environment without long-term adverse effects?

There are those who say there is but one way to the future: the human way, fashioned by the concepts, perspectives and tools of the modern information age that thrives on never-ending growth. Nonsense! There isn't just one preordained future. Surely we can use our intelligence and technology to chart a path consistent with the requirements for coexistence with other species. It would be far easier to achieve than to try and create a wholly human-engineered planet.

Fortunately you, as an individual, can be a catalyst for change, but first you must connect with the natural world and block out the drumbeat and dictates of the dominant culture that is blind to the needs of the non-human world.

One of the best ways to quiet the drumbeat is to take extended outdoor outings (the longer the better), backpack trips, river trips, sea kayaking trips and travel to relatively wild places. The longer you are away from cars, phones, computers and news of the world, the more likely you are to begin listening, seeing and hearing a different message—the voice of our evolutionary legacy. It takes multiple exposures over several years to fully appreciate what is

There isn't just one preordained future. Surely we can use our intelligence and technology to chart a path consistent with the requirements for coexistence with other species.



Watching the waves at Point Reyes

there and for the fog of modern life to clear.

It is difficult to describe in words what is really an inner change in the way of thinking of things, but let me try.

In my travels I have seen a cougar, been sniffed by a black bear, startled (and been startled by) a herd of elk in a forest. I passed a rattlesnake by less than two feet as I jogged by it. I've seen eagles, osprey, turtles sunning on logs, fish lazily swimming in clear pools, touched moss that felt like velvet and looked like a carpet of green covering everything but the huge trees of an ancient old growth forest. There have been thunderstorms, snowstorms, frozen lakes and streams. I've heard the roar and felt the power of the Colorado River... touched rocks two billion years old and fossils millions of years old. I've seen the grandeur of high mountains, deep gorges and desert vistas that seem timeless and endless. I've seen meteors in the twilight and the Milky Way stretching from horizon to horizon in such a profusion of stars that their ghostly glow, their star-shine, casts

enough brightness so that it is easy to walk across the landscape without an additional light source.

But it isn't just about seeing, feeling and hearing the voices of nature. It is about having a conversation with the natural world, establishing a two-way connection. With time and patience it is possible to know where to find certain animals and plants, come to anticipate weather patterns, know where to camp and how to stay out of trouble. The very fabric of nature—the web of life that connects everything together—begins to emerge. Diversity is everywhere, even in the smallest places, and the dependencies of plants and animals on the land, water and air become more than superficial concepts. And every so often you connect, if only briefly, with something non-human, such as an owl perched in a tree or a pond. When that happens, you are no longer chained to the human world—you are free to breathe the air of wildness.

Done often enough and for long enough periods of time, you begin to experience a different reality that never quite leaves your senses. Even a simple walk can reveal valuable lessons and force you to acknowledge environmental issues with renewed vigor and intensity. Here is an example:

While hiking near a marsh, I stopped to rest under an old oak tree. Soon the cheep, cheep of baby birds called for investigation. After much hunting and looking with binoculars, a mother bird revealed her nest as she flew under a large branch landing. Upon more diligent inspection, more holes and more nests were revealed. Then my friend noticed a beehive in one of the holes. It turned out the tree was alive with activity. Squirrels were active as well. I remembered how I had helped collect acorns from under an equally old oak tree last year so they could be fed to injured deer rescued from around the county. It seems that deer use acorns to fatten themselves in preparation for winter. I also remembered picking up acorns that were later planted in a greenbelt around homes where cattle had destroyed all the young oaks. Here

was a tree giving life to birds, bees, squirrels, deer and a new generation of oaks.

On my way home, I came across workmen cutting old oaks for firewood. Tree after tree was being taken from the rolling ranch land. Neither the workmen nor owners thought (or cared) about birds, bees or acorns. Their only task was to cut firewood for suburban fireplaces. For me it was a crushing vision—for what was being taken was habitat. It wasn't just trees being taken; it was food and shelter for countless wild things. Looking at the surrounding vacant hills, you realized that this area had been mining old oak trees for quite some time. Many people drove by and saw the tree cutting that day, but how

individuals can forge a connection with the natural world that allows them to appreciate non-human life and the planet that supports it. They can then begin to understand how they fit into the fabric of the planet, not just the artificial world of humanity. With this new perspective, it is possible to identify, evaluate and (even more importantly) care about the effects human activity is having on the world around us. When individuals take responsibility for paying attention to the natural world, they begin to feel the losses one by one. Society too begins to feel the losses as sensitized people band together. Soon these losses no longer are silent ones and collectively we are forced to decide if we want to be the



**Enjoying the breeze and sunshine at Arch Rock**

many realized the full implications: fewer trees, fewer birds, fewer bees, fewer deer? It was just another anonymous shrinkage of wildness, another casualty of disconnection from the natural world, the dominant culture marching on too blinded to see, to hear, and to feel the loss.

But there is a way for individuals to break this cycle of ignorance and end this silent chain of destruction. By extensive firsthand observation of nature through outings to wild places,

sole gods of the planet or whether we want to take our place within the family of nature.

And perhaps, just perhaps, Americans will then begin to match their conservationist poll numbers with a similar level of conservationist accomplishments.

**Bob Anderson is a long-time Sierra Club National Outings leader who is active in forest and river issues in and around his home in Igo, a small Shasta County community.**

# Roadless to Wilderness hikes & other events

**C**ome along on fun and informative hikes into some of California's last unprotected wild places and learn how you can help turn these roadless areas into Wilderness areas. Once these areas are designated as Wilderness, they will be protected forever. Come see the beauty we are trying to protect on any of the following outings! Also, check our web site for additional events at <http://www.calwild.org>.

Saturday, Sept. 16: Hike in the Six Rivers National Forest's amazingly diverse **Mad River Buttes (also known as Board Camp) Potential Wilderness**. For more information, contact Ryan Henson at (530) 474-4808 or [ryan@calwild.org](mailto:ryan@calwild.org).

Saturday, Sept. 16 and Sunday, Sept. 17: Backpack in the Shasta-Trinity National Forests' **Mount Eddy Potential Wilderness** and enjoy rare plants and awesome views. For more information, contact Kyle Haines at (530) 467-5405, or at [klamath@sisqtel.net](mailto:klamath@sisqtel.net).

Friday, Sept. 22 through Sunday, Sept. 24: Car camp, day hike, and enjoy ancient forests and wildflowers in the large and remote **Yuki Potential Wilderness** managed by the Mendocino National Forest and the BLM. For more information, contact Lynn Ryan at (707) 923-1910 or [lynnr@asis.com](mailto:lynnr@asis.com).

Sunday, Sept. 24: Hike from Saddlebag Lake to Lundy Canyon in the Inyo National Forest's **stunning Hoover Wilderness and Hoover Potential Wilderness Addition**. For more information, contact Sally Miller at (760) 647-1614, or at [sally\\_miller@tws.org](mailto:sally_miller@tws.org).

Sunday, Sept. 24: Hike to beautiful **Heart Lake** in the Lassen National Forest. For more information, contact Helen Ost at (530) 343-2417, or at [johnheln@inreach.com](mailto:johnheln@inreach.com).

Saturday, Sept. 30: Day hike to the **Grouse Lakes Potential Wilderness**. Hike from Grouse Ridge to Sand Ridge for views of the Sierra Buttes, then to Glacier Lake and back via the lower trail. Approximately 7 miles and 1500' elevation gain. For more information, contact Dave Roberts at (916) 441-6066 or at [roblands@aol.com](mailto:roblands@aol.com).

Saturday, Sept. 30: Hike in the Lassen National Forest's **spectacular Chips Creek Potential Wilderness**. For more information, contact Helen Ost at (530) 343-2417 or at [johnheln@inreach.com](mailto:johnheln@inreach.com).

Saturday, Sept. 30: Hike along the stunning South Fork Trinity River in the Six Rivers National Forest's **Underwood Potential Wilderness**. For more information, contact Dan Close at (707) 826-0490 or at [closedan@yahoo.com](mailto:closedan@yahoo.com).

Sunday, Oct. 1: Hike to the **remote and diverse Dexter Canyon and Glass Mountain Potential Wilderness** areas in the Inyo National Forest. For more information, contact Sally Miller at (760) 647-1614 or [sally\\_miller@tws.org](mailto:sally_miller@tws.org).

Saturday, Sept. 30 and Sunday, Oct. 1: Camp and hike in the **newly created Cascade-Siskiyou National Monument and Soda Mountain Potential Wilderness** that straddles the California-Oregon border. For more information, contact Kyle Haines at (530) 467-5405 or [klamath@sisqtel.net](mailto:klamath@sisqtel.net).

Saturday, Oct. 7: Sierra Club North Group annual banquet and slideshow and introduction to the California Wild Heritage Campaign in Arcata. Contact: Sue O'Connell at (707) 442-5444 or [soconnel@Northcoast.com](mailto:soconnel@Northcoast.com).

Saturday, Oct. 7 and Sunday, Oct. 8: Overnight hike into the Mendocino National Forest's **outstanding Yolla Bolly-Middle Eel Potential Wilderness Addition**. Contact: Helen Ost at (530) 343-2417 or [johnheln@inreach.com](mailto:johnheln@inreach.com).

Friday, Oct. 13 through Sunday, Oct. 15: Car-camp and day hike in the **dramatic forests and canyons of the Mendocino National Forest's Yolla Bolly-Middle Eel Potential Wilderness Addition**. For more information, contact Lynn Ryan at (707) 923-1910 or [lynnr@asis.com](mailto:lynnr@asis.com).



Artwork: Heron Dance

# California Wild Heritage Campaign reaches out to new areas of the state

by **Tina Andolina and Ryan Henson**

**T**he California Wild Heritage Campaign is proud to welcome several new team members, including a new director and a full-time organizer in the Los Angeles region. Bob Schneider, the new director, will be responsible for all aspects of the campaign, including implementation of its strategic plan, conservation programs, coalition building, staff supervision, and fund raising. Because the director's position is more than a full-time job, Liz Merry (Bob's business partner and wife) has also been hired as a strategic consultant.

Bob and Liz are best known in Wilderness circles as the two who successfully put together this year's California Wilderness Conference, the biggest Wilderness Conference in decades. With their direction, this campaign is ready to kick into high gear.

Our new Los Angeles organizer is Tim Allyn of the Sierra Club. Tim is working with local activists in the L.A. region and the Mojave desert to promote wilderness and wild rivers and reach out to new wilderness activists.

A lot has happened to move the campaign forward in recent months. Media coordinator Jeff Howitt has been working hard to improve campaign materials and to create a special campaign web site at <http://www.californiawild.org>. Ryan Henson of the CWC has trained, assisted, and encouraged activists to survey potential new wilderness areas and prepare official wilderness proposals for them. Thus far, over 90 percent of the potential new wilderness areas in California have either been field-surveyed or are in the process of being surveyed. The real need now is for activists to begin preparing official wilderness proposals.



Jim Rose

**Many groups are leading hikes into potential wilderness areas as a way of generating more support for wilderness designation (see page 14).**

Grassroots groups are mobilizing in every corner of the state to build momentum for an ambitious and successful Wilderness proposal. The Wild Heritage Campaign staff has given slide show presentations in many communities around the state to recruit new activists to advocate for wildlands protection.

Across the state, independent grassroots groups are forming to develop local wilderness campaigns and reach out to others in their community. Already there are new groups of wilderness warriors in Sacramento, Auburn, Stockton, Nevada City, Alpine County, Amador County, Coloma, San Diego, Bishop, Lake County, Ukiah, Garberville, Arcata and Eureka, Trinity County, Chico, Redding, and Mount Shasta, among others. Activists are working on putting together meetings in other communities with the goal of forming dedicated groups to work on wilderness protection.

Many groups are planning and leading hikes into potential wilderness areas as a way of generating more support for wilderness designation. Others are developing flyers and brochures, and meeting with folks at trailheads and in campsites. Also, groups are holding activist and media training sessions to ensure folks have the tools and skills necessary to be

effective wilderness advocates.

Wilderness and wild and scenic designation requires local champions. Without local support, passing such an ambitious wilderness bill would be impossible. We need groups of wilderness advocates in every community around the state. To find out how you can help put together a meeting for a slide show presentation or even simply an activists' meeting to generate ideas for promoting wilderness locally, contact your regional organizer:

**Northern California - Ryan Henson**  
(530) 474-4808 - [ryan@calwild.org](mailto:ryan@calwild.org)

**Central Valley and Sierra Nevada Foothills - Tina Andolina**  
(530) 758-0380 - [tina@calwild.org](mailto:tina@calwild.org)

**Eastern Sierra - Sally Miller**  
(760) 647-1614 - [sally\\_miller@tws.org](mailto:sally_miller@tws.org)

**Central Coast/ Los Padres region - Erin Duffy** (916) 557-1100 -  
[erin.duffy@sierraclub.org](mailto:erin.duffy@sierraclub.org)

**Los Angeles Basin/Mojave desert - Tim Allyn** (213) 387-6528 x 202 -  
[tim.allyn@sierraclub.org](mailto:tim.allyn@sierraclub.org)

**San Diego County - Camille Armstrong**  
(858) 566-9263 - [4camille@san.rr.com](mailto:4camille@san.rr.com)

**Tina Andolina and Ryan Henson are Conservation Associates for the California Wilderness Coalition.**

# Americans overwhelmingly support a stronger roadless area policy

by **Tina Andolina and Ryan Henson**

**O**n Monday, July 17th, the official comment period for the roadless area draft plan ended, and the Forest Service had in hand *one million* comments demanding stronger protection for these wild places. This is nearly four times the previous record for public comments received by a federal agency about a public policy initiative. (The previous record of 275,000 letters was set during the organic food standards debate in 1998.)

The Forest Service reported that a majority of the speakers at most public hearings were not only in support of banning new roads, but also asked that the Forest Service strengthen its proposed policy by prohibiting off-road vehicles, logging, and mining. Most participants wanted the Forest Service to extend the roadless area policy to include the Tongass National Forest in Alaska.

The national trend of overwhelming support for roadless areas was definitely evident in California. In hearings from Eureka to Redding to Sacramento to Oakhurst to San Diego, wilderness supporters delivered an undeniable mandate to protect our wild places.

In Sacramento, nearly 100 members of the public expressed their desire to see the plan strengthened. That hearing was initially not on the itinerary, but the strong showing of 120 wilderness supporters clearly demonstrated that Sacramentans want to be involved in decisions that affect our national

forests. About 25 Bay Area residents also made the trek to Sacramento to add their support for roadless areas.

In Oakhurst, environmentalists at the comment hearing outnumbered opponents of the roadless area policy by more than half. Roadless area supporters considered this an incredible victory, as usually Forest Service hearings in Oakhurst are dominated by people from the wise-use group, the Sierra Nevada Access Multiple Use Stewardship.

In Santa Clara, roadless area proponents again outweighed the opposition, even though the hearing was nearly impossible to find. (It was buried in the bowels of an oversized, sterile, suburban mall.)

In Redding, a region noted for its close ties to the timber industry, local activists held a "Picnic for Roadless Protection" prior to the roadless hearing. Twenty-eight activists attended the hearing, which marked the first time in anyone's memory when

conservationists outnumbered the opposition at a major hearing in Shasta County involving federal

land management. The following day, another picnic was held in Yreka. Since Siskiyou County is a hotbed of anti-environmentalism, activists were pleased to find that half the audience in Yreka supported roadless area protection.

In Chico, 61 conservationists attended the hearing, and only 16 people opposed the protection of roadless areas.

In Mammoth and Bishop in Eastern Sierra, wilderness advocates overwhelmed those opposing the proposal, most of which were more concerned with expanding the ski areas than setting aside areas for other forms of recreation. While that region is not known for its environmental credentials, it is renowned for its wild scenery. And when the time came for locals to take a stand to protect that scenery, they did. In force.

Newspapers from across the country and up and down the state threw their weight behind the roadless initiative. The *Los Angeles Times* said, "... the administration moved to protect 43 million acres of roadless national forest from any road construction. The plan, which would be made final in the fall, would halt or severely limit logging and other resource extraction in the roadless areas, many of which are worthy of wilderness designation."

The *San Francisco Examiner* said, "It makes sense to save the wilder parts of the National Forests from road construction that is not impelled by important economic interests or needed recreational access. Logging can be continued where otherwise justified in areas already reachable by forest roads. Users of off-road recreational vehicles already have thousands of miles available to them."

None of this would have been possible without the support of all of you. Many thanks to everyone who sent in comments and e-mails, signed postcards, and testified at the numerous hearings.

The roadless policy is a good step forward in the long fight for permanent protection of these areas—protection only Wilderness designation offers. Let's keep the momentum going.

**Tina Andolina and Ryan Henson are Conservation Associates for the California Wilderness Coalition.**



## Bob Schneider and Liz Merry

**B**ob Schneider recently accepted the position of campaign director for the California Wild Heritage Campaign (CWHC, see campaign update on page 15). Bob's wife Liz Merry also took a job with the CWHC as its strategic consultant. Bob and Liz have a long history of conservation activism. For example, Bob is a co-founder of the California Wilderness Coalition and currently serves on the board of directors for the Central Valley Water Quality Control Board. Bob has also been a builder and developer in Yolo County, California, where he built the first co-housing development in the U.S., and created a popular wetlands park. Liz Merry serves on the Sierra Club California board of directors, is chair of the Sierra Club Yolano Group, and serves on the steering committee for California Duck Days, an annual celebration of wetlands and wildlife held in Davis.

Bob and Liz's biggest recent achievement was organizing the highly successful California Wilderness Conference in Sacramento in May of this year. Over 700 people attended the conference, and the event inspired activists from all around the state to get involved in the CWHC.

### Why is wilderness important to you?

Liz: I went backpacking a lot as a kid and kept it up in my adult years. Wilderness is the ultimate gift for our future.

Bob: I was in the Boy Scouts and grew up hiking in the Sierra and other parts of the state. It kind of grows on you. Today, as we deal with air quality, sprawl, etc. I am happy to know that these places have been set aside for solitude and renewal, as well as habitat for plants and animals.

### How did you meet?

Bob: We went to a political training in Baltimore sponsored by the Sierra Club. I wasn't very successful with my flirting at the time, but I wrote and called her a few months later.

Liz: We dated a year; our dates usually coincided with major conservation happenings.

### How did you get involved in the conservation movement?

Liz: In 1987, I started working on a local initiative in Los Angeles to prohibit oil drilling in Santa Monica Bay.

Bob: I first got involved in 1966 in the fight to establish Redwood National Park. My friend Jim Rose and I would head up to Del Norte County every few weeks and take photos of the proposed park and then share them with Sierra Club executive director David Brower, who put them to good use.

### What inspired you to get involved in the CWHC?

Liz: The conference was very empowering and made us feel like we could contribute more. I think it's important to empower local activists to protect what we have left before it's too late.

Bob: I took a hiatus from the wilderness movement for a while, but meeting Paul Spitler of the CWC inspired me to come back. Paul is helping to rejuvenate the wilderness movement in California. Also, the California Wilderness Conference was a great success and we wanted to continue our work on this issue. Wilderness areas are being lost around the country. We have a unique opportunity in California to protect our remaining wild areas. We're here to help grassroots activists protect these important places.



Liz and Bob on their recent backpacking trip to the Marble Mountains

### What unique experience do you bring to your new jobs?

Bob: The skills I acquired as a builder and developer will be useful to grassroots activists to help them protect wilderness. These skills include project and campaign planning, time and budget management, and fundraising, among others.

Liz: I have experience working at every level of the non-profit world. Just last year I received a master's degree in business from California State University, Sacramento and I can help share this knowledge with participants in the campaign.

### What are you most proud of in your conservation work?

Liz: Helping to organize the 2000 California Wilderness Conference.

Bob: I'm proud of my work on Redwood National Park. It feels great to have my name listed on a plaque at the Volunteer Grove in the park. Also, the Sierra Club gave me the John Dierold Award for Volunteer Lobbyists. John Dierold was the Sierra Club's first lobbyist, so it's quite an honor to be given an award in his name.

# Off-road vehicle management may improve in Napa County

by Susan Harrison

**A**t the junction of Napa and Lake Counties, between Highway 29 on the west and Morgan Valley Road on the east, lies a 17,000-acre natural area known as the Knoxville public lands. Home to bears, mountain lions, bobcats and other wildlife, these lands support profusion of rare plants growing on their unusual soils. The landscape is rocky and rugged, covered with cypress forest and chaparral, with streams and oak groves providing occasional oases.

Miners came and went in the 19th century, and a few ranchers live in the area, but today very few people visit these public lands.

The Knoxville lands are managed by the U.S. Bureau of Land Management (BLM). For 25 years, the centerpiece of the BLM's approach has been to encourage off-road vehicle (ORV) users by building trails and campsite facilities.

But with very little policing, the area has become known as a haven for lawless behavior. Motorcyclists and four-wheel drivers have cut gates and overturned barriers to trespass on private property, and have damaged streams and meadows. Gun enthusiasts, sometimes with automatic and semiautomatic weapons, are often seen firing away a few feet from the main road. Shooting up appliances, propane tanks and cars, and leaving the wreckage littering the landscape, is a pastime that has flourished at Knoxville.

The BLM's 1991 Knoxville management plan called for increased law enforcement, but also for building over 30 miles of new ORV trails. The ORV emphasis arose from the fact that grants from the California ORV Commission were a ready source of funds for managing lands such as Knoxville. Neighboring ranchers were not happy with this "solution," believing increased



Jim Rose

**Hillsides are scarred with off-road vehicle routes at the Knoxville area**

ORV traffic would worsen their trespass problems. They appealed to the Interior Department, and threatened to sue. Napa County, wary of an increased need for law enforcement, joined these protests.

In the past year, the state ORV Commission has been radically reformed. Two environmentalists, including the California Wilderness Coalition's executive director Paul Spittler, now serve on the ORV Commission. No longer does the ORV Commission simply exist to promote trail systems; it is returning to its original mission, which is to manage the sport and contain the damage it causes.

Changes are in the air at Knoxville, thanks to these statewide changes. The BLM is proposing amendments to its Knoxville Management Plan that would increase law enforcement,

restrict shooting to specific areas, and suspend the expansion of the ORV trail system. There would still be guns and motorcycles at Knoxville, but there would be rangers there four days a week to cut down on the excesses. The BLM plans to ask the ORV Commission for money to implement this amended plan.

Environmentalists are guardedly pleased with these changes, although some would like to see shooting and ORV use stopped altogether. The neighboring landowners remain distrustful, suspecting BLM of still desiring to turn Knoxville into a full-blown motorcycle park. They would like to see the area closed. The ORV users have been largely quiet, since relatively few of them use the area they disdainfully call "Rocksville."

## What you can do

To express your concerns about how the Knoxville public lands are managed, you can write:

Rich Burns  
Ukiah Area Manager  
U.S. Bureau of Land Management  
2550 North State Street  
Ukiah, CA 95482

E-mail: [rburns@ca.blm.gov](mailto:rburns@ca.blm.gov)

**Susan Harrison is a professor in the Department of Environmental Science and Policy at the University of California at Davis. Her research includes serpentine plant ecology.**



Jim Rose

**Wildflowers bloom amid broken glass and shotgun shells at Knoxville**

# Lassen Volcanic National Park plan needs your support

by Ryan Henson

In 1915 Lassen Peak began two years of impressive volcanic eruptions. In 1916, inspired by awestruck accounts of explosions and smoke, Congress declared the peak and its surroundings "Lassen Volcanic National Park," setting aside over 106,000 acres (roughly 65 square miles).

Today, even without an eruption to remind them, the staff of Lassen Volcanic National Park are proposing changes in park management that may permanently preclude large, destructive, tourist development, return disturbed ecosystems to a more natural state, and provide high-quality recreation experiences to the public. The park staff have released a draft management plan that describes how the park will be managed for the next 15 years. The following is a description of the plan's key elements.

## Wilderness

In 1972, Congress designated over 78,000 acres of the park as wilderness. This was important because the National Park Service of that day had made it a priority to "develop" park lands. Ski areas, new roads, and garish buildings were despoiling many of our parks and conservationists saw the rather ironic need to protect large portions of Yosemite, Yellowstone, Lassen, and other parks as wilderness to stem the tide of development.

While only Congress can protect an area as wilderness, the recommendations of federal land managers often greatly influence Congress's decisions. The newly released Lassen plan proposes to study the possibility of recommending to Congress that an additional 25,000 acres of the park be designated as wilderness. If Congress accepts and acts on this recommendation, it would enlarge the park's wilderness lands to 104,594 acres—a full 99 percent of the park. (Currently, over 75 percent of the



Phil Farrell

Lake Helen area,  
Lassen Volcanic  
National Park

park is designated as wilderness.) Until an in-depth study is completed of how much of the 25,000 acres should be recommended for wilderness status, staff will manage these lands as though they were already protected as wilderness. The plan notes that wilderness expansion will provide "permanent protection against future development."

## Managing ecosystems

One of the greatest issues facing public land managers today is fire. Most of California's ecosystems need periodic, low-intensity fire to remain healthy, but decades of Smokey Bear rhetoric have convinced the majority of the public that fire must be fought at all times. As more people move into California's forests, fire management becomes even more complicated.

The draft Lassen plan notes that fire suppression has ecologically degraded large portions of the park, and proposes that overall philosophy of the park be as follows: "Fire is recognized as a normal process necessary for the restoration of natural vegetative communities." To translate this philosophy into an effective management tool, the park proposes to increase the amount of land it burns intentionally every year.

The park has recorded populations of 56 mammals, 190 birds, and 18 amphibians and reptiles. The park's plan proposes the visionary step of reintroducing species like the fisher and wolverine, which once lived in the park, but have been driven out, probably due to logging and development pressure

outside the park. The National Park Service apparently hopes that improved management on the adjacent Lassen National Forest will improve the chances of survival for these creatures.

## What you can do

It is fairly rare to see such visionary blueprints for the future from the federal government. It is likely that supporters of new road construction and tourist development in the park, as well as opponents of scientific fire management and new park wilderness, will strongly oppose the draft management plan. Please support the National Park Service's vision for Lassen Volcanic National Park by writing a letter to:

Marilyn H. Parris, Superintendent  
Lassen Volcanic National Park  
P.O. Box 100  
Mineral, CA 96063-0100

Fax: 530-595-3262  
E-mail: marilyn\_h\_parris@nps.gov

Letters are due by October 31, 2000. In your letter, please mention that you support Alternative C in the draft general management plan, and specifically express support for:

- Maximizing the amount of wilderness in the park
- Increasing the use of prescribed fire
- Reintroducing sensitive species

**Ryan Henson is a Conservation Associate for the California Wilderness Coalition.**

# The importance of wilderness in the preservation of Pacific salmon and steelhead

by Amanda Greenberg

**S**urvival for California species of salmon and steelhead is becoming increasingly difficult. Although the problems facing the salmon have existed for many years and the causes of decline range widely from urban growth to mining to overfishing, the overriding obstacle that salmon and steelhead face is the lack of habitat in which they can thrive. Eighty-five percent of the spawning streams that existed in 1850 are now either inaccessible or too polluted for the fish to use. It is, therefore, necessary to begin to remedy the situation by preserving California's remaining unprotected wilderness areas while Pacific salmon and steelhead still have a fighting chance to survive. Wilderness areas, state and national parks, which harbor most of California's intact, roadless old-growth forests, are the last bastions of salmon and steelhead habitat left in the state.

Why are salmon dependent on old-growth forests? The answer is that clearcutting along streams directly results in a significant reduction of oxygen in the water, causing salmon eggs to suffocate. The higher temperatures in the clearcut areas also contribute to "warmwater disease," a major killer of adult salmon. Given the absence of logging in designated wilderness areas, problems such as these do not exist there. Streamside vegetation keeps the water temperatures



For salmon and steelhead trout, like these smolts in Elk Creek, wilderness is the difference between life and death.

Charles Watson

cool and supports the growth of insects the fish will eat. In addition, the lack of pollution in these areas from human-made structures, such as dams, allows the Pacific salmon and steelhead to prosper.

Another significant environmental hazard that is currently contributing to the decline in salmon and steelhead populations is the growth and use of road networks in the environments in which the fish live.

The road networks are the most important sources of accelerated delivery of sediment to fish-bearing streams. It has been shown that the sediment contribution to streams from roads is often much greater than that from all other land management activities combined, including log skidding and yarding. Large quantities of sediment have been dumped into streams via road-related landslides, surface erosion, and stream channel diversions. The increased sediment in California's streams, which is

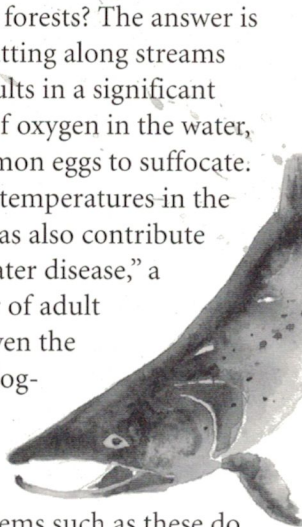
mostly due to the use and construction of road networks, is quickly obliterating some of the remaining healthy streams found in California.

According to recent available data, fine sediment levels range from 20 to 60 percent in many streams outside of wilderness and roadless areas. Thus, salmon survival in many watersheds outside of wilderness and roadless areas has been reduced and may average only ten to fifteen percent.

Will the salmon and steelhead ever recover? Their future depends on preserving those last wild strongholds where they still spawn, and restoring streams that have been damaged by dams or other human impacts. Some watersheds are protected by wilderness designation, but others are threatened by logging and road-building. Thus it is imperative to protect these roadless areas as wilderness in order to retain the few healthy habitats the imperiled fish have left.

**Amanda Greenberg was an intern for the California Wilderness Coalition in spring 2000.**

Artwork: Heron Dance



# Welcome to CCRISP—The California Continuing Resource Investment Strategy Project

**A**t the urging of CWC and other organizations, in July of 1999 the State of California Resources Agency initiated a project designed to identify priority habitat throughout the state, and implement programs to protect that habitat. Initially dubbed a “conservation blueprint,” the state soon adopted the title CCRISP: the California Continuing Resource Investment Strategy Project.

For the past year, state officials have worked with leaders of conservation organizations, farming and ranching interests, business leaders,

and local elected officials to plot out how best to develop this strategy. After receiving input from these various parties, state resource planners are now designing the habitat assessment program.

CWC executive director Paul Spitler was selected as a member of the project’s core working group and has been working with agency staff to design the project. The program aims to answer three fundamental questions: Where are the state’s most important lands and natural resources? What are the highest

priorities for conservation? What is the most appropriate way to protect these natural resources?

It is anticipated that through a process that combines scientific assessment with public participation, the state will identify priorities for conservation. This will lead to new state-funded programs to protect the areas and resources identified. The 2000/2001 state budget allocated \$2 million for the effort, and the project is underway. Stay tuned to the *Record* for the latest on this exciting project.

## POTENTIAL WILDERNESS PROFILE

### The Skedaddle Mountains

**T**hough the Modoc bison that once lived here are extinct, deer and antelope still roam. Spectacular rock formations and vast fields of native grasslands characterize this remote wild land. Deep canyons afford excellent habitat for wild rose, willow, and cottonwood. Golden eagles ply the winds, and sage grouse perform their complex mating dances.

The Skedaddle Mountains are rugged and cut by many steep, rocky canyons, cliffs and ridges. Amedee Mountain, for example, is characterized by jagged bluffs, caves, and volcanic spires. The higher elevations support aspen groves and patches of large berry shrubs. Surrounding the mountains are sagebrush flats, some of which are dry ancient lake beds.

These varied terrain types make

**Approximate acreage: 63,000**

**Managing agency: BLM, Eagle Lake Field Office**

**Location: 30 miles northeast of Susanville in Lassen County**



Eagle Lake Audubon Society

for outstanding cross-country hiking, hunting, and horseback riding. Excellent cross-country hikes include Hot Springs Peak, Big and Little Spencer Basins, and Wendel Canyon. From the top of 7,680-foot Skedaddle Mountain are incredible views in all directions: to the south and east, one can see the multiple mountain ranges and dry lake-bed valleys of the Great Basin. To the north and west, the majestic volca-

nic peaks of the Cascades rise above the Modoc Plateau. To the west, the Sierra Nevada towers above Honey Lake and the surrounding flat lands.

Native American cultural uses of the area continue today, and throughout the region there are signs of human use from thousands of years ago. Euro-American settlers passed through the area on the Mormon Emigrant Trail and other historic routes.

### **Forest Service rejects helicopter hunting plan**

Under formal threat of a lawsuit from the Center for Biological Diversity and the Ventana Wilderness Alliance, the Los Padres National Forest has denied an application for a special-use permit to allow hunting guide outfitting via helicopter fly-ins in remote areas of the Los Padres National Forest near Big Sur. The proposal called for helicopters to land adjacent to the Ventana Wilderness area. The vicinity of at least two of the four landing sites are utilized by condors. Also, condors are known to use the projected flight paths of the helicopter operations. Such low level flights cause nest abandonment, flushing from the nests and roosts, high stress levels, and lower reproductive success.

### **Ski area wants to expand into roadless area**

Mammoth-June Ski Areas held a meeting in the eastern Sierra community of June Lake in mid-August to discuss possible plans for expansion of June Mountain Ski Area into the San Joaquin Roadless Area on the Inyo National Forest. This roadless gem adjacent to the Ansel Adams Wilderness has for many years been a high priority for wilderness designation. The ski area's consultant is looking at expansion possibilities in the roadless area, including up onto San Joaquin Ridge, and the ski area will unveil its plans for June Mountain this coming fall. The President's roadless initiative, as currently drafted, would prohibit ski area development in roadless areas such as San Joaquin, but that fact doesn't seem to phase ski area officials. Over 100 citizens attended the meeting and expressed concerns about the impacts of ski area expansion and associated private land development on the June Lake community and surrounding environment.

*Sally Miller, The Wilderness Society*

### **Sequoia off-road vehicle trails canceled**

Sequoia National Forest Supervisor Arthur Gaffrey recently withdrew his controversial decision to construct 290 miles of new off-road vehicle (ORV) routes through the forest. The California Wilderness Coalition and other groups had appealed the supervisor's plan to construct the new routes, which would have cut through sensitive streamside habitats and six separate roadless areas, including the Canell, Chico, Dennison Peak, Oat Mountain, Rincon, and Staff Roadless Areas. In 1999, twenty-five members of Congress sent a letter to Mr. Gaffrey expressing their opposition to the project.

In announcing his withdrawal of the trail construction plan, Mr. Gaffrey cited "uncertainty" over the future of the project given President Clinton's designation of a large portion of the national forest as the Sequoia National Monument, and the Forest Service's proposed roadless area policy.

### **Government denies 1 of 2 proposed geothermal power plants in Modoc National Forest**

The U.S. Forest Service and Bureau of Land Management announced on May 31, 2000 that they are denying CalEnergy Corporation's application to build the proposed Telephone Flat geothermal development project in northeastern California's Modoc National Forest. The federal agencies also announced that they are approving CalPine Corporation's application to construct the proposed Fourmile Hill geothermal power plant a few miles to the northwest. Both projects are proposed in the Medicine Lake Highlands region of Siskiyou County.

The CWC and other groups oppose the geothermal development projects because of the ecological and cultural impact they will have on the Highlands. Ryan Henson of the CWC hailed the government's announcement as a

"tremendous first step toward protecting the Highlands' social and ecological values—we are now half-way there."

Opponents of the projects will now devote all of their energy and resources to stopping the Fourmile Hill project, while CalEnergy Corporation will likely challenge the government's denial of its development proposal.

### **Mourning Frank Wheat**

Frank Wheat, who recently passed away, was a giant in the development of environmental law. Frank was a founding trustee of Southern California Center for Law in the public interest. Frank loved the California desert and played a quiet but significant role in its preservation.

Frank and his son Carl had completed the wilderness surveys for Cady Mountains and Sleeping Beauty Mountains. A picture taken this May shows Frank atop Horn Peak in the middle of the Turtle Mountains Wilderness. Frank's good will and strong spirit will be sorely missed.

### **Marc Reisner passes away**

Marc Reisner died on July 21st of cancer. He was 51. Reisner was best known for his 1986 book, "Cadillac Desert," about destructive dam-building, water subsidies, and the frittering away of the West's scarce water resources. The book stimulated a campaign for water policy reform that continues to the present.

Mr. Reisner devoted much of his time to promoting solutions to California's environmental problems. He was a consultant to the Pacific Coast Federation of Fishermen's Associations on removing antiquated dams that were interfering with anadromous fish runs.

*Condensed from the SF Chronicle.*

### **Teachers to Congress: Don't Force Us to Spend Money on Forest Management**

A recent poll found that by an overwhelming margin, public school

teachers support a complete separation between national forest management and school funding.

The poll was released as Congress is considering a measure, S. 1608, the "Secure Rural Schools and Community Self Determination Act," that would continue to tie school funding to national forest management, and would create new incentives for logging in national forests. The Senate is scheduled take up S. 1608 in September.

Among the findings of the poll:

- 87% of those polled would prefer a policy that "provided guaranteed funding for schools and roads that is not connected to logging activity in any way, shape or form."
- Only 22% of those polled favored the proposal pending before Congress, while 53% favored an alternative proposal that would not force counties to divert education funding to national forest management. Only 15% favored the current system.
- 64% agreed that "there is no reason the richest nation on earth should be funding the education of rural kids at the expense of our national forests."

### **Proposal to log in Orleans Mountain Roadless Area**

Despite the President's directive to the Forest Service to preserve our nation's last remaining roadless areas, timber sale planners in the Six Rivers National Forest of northwest California have proposed to log in the heart of the Orleans Mountain Roadless Area.

The area burned in the Big Bar fires in 1999, and the Forest Service is planning a timber sale of trees considered dead or dying. The logging would likely be conducted with helicopters.

The Orleans Mountain Roadless Area, approximately 77,000 acres in size, contains outstanding groves of ancient forest in watersheds containing salmon and steelhead trout. The region is also being considered as an addition to the Trinity Alps Wilderness. Citizens for Better Forestry and other groups have filed an appeal of the Forest Service's plan and will meet with them to address these concerns in September.

### **Wilderness as a national agenda**

Twenty-eight conservation organizations co-sponsored a national wilderness conference, held in Denver on Sept. 8-10. The conference featured workshops such as "Open Space: Connecting Urban Landscapes to Wilderness," "The Role of GIS in Wilderness Advocacy," and "National Conservation Areas - Helping or Hurting the Wilderness Cause?" U.S. Forest Service Chief Mike Dombeck spoke on "Protecting Roadless Areas: the Administration's Perspective." Over 500 people attended.

### **Sierra Pacific Industries issues logging moratorium**

Over the last six months activists, from college students to real estate agents and small business owners, have called on Sierra Pacific Industries (SPI), one of the largest landowners in California, to reform its current logging practices. SPI owns over 1.5 million acres of land in California, around 1 percent of the state's surface area, and plans to clear-cut and replant about 1 million acres of its holdings during the next 70 years. At the heart of this controversy has been the Wall Timber Harvest Plan (located in Calaveras County), under which SPI plans to log over 1,300 acres of habitat critical to the Northern goshawk, Pacific fisher and California Spotted owl.

On July 26, SPI agreed to put a 30-day moratorium on logging in Calaveras County and stated that it planned to reassess its harvest strategy. In response to complaints about clearcutting in Calaveras County, California Assembly Speaker Fred Keely filed legislation aiming to halt clear-cut logging in California for at least two years while scientists evaluate controversial timber harvesting methods.

*Reprinted from American Lands Alliance's list-serve.*

### **On the verge of protection**

On July 25, the House of Representatives voted approval of Congresswoman Mary Bono's Santa Rosa and San Jacinto Mountains legislation. The bill would create a new National Monument in the

Palm Springs area. As of press time, the bill is still pending....

### **Humboldt Redwoods State Park considers wilderness**

California Dept. of Parks and Recreation is currently trying to determine whether or not three new wilderness areas should be designated in Humboldt Redwoods State Park north of Garberville. The three potential new wilderness areas harbor ancient forests of Douglas fir, coast redwood, western hemlock, and tan oak in the Bull Creek and Canoe Creek watersheds. Both Bull and Canoe creeks flow into the nearby South Fork Eel River and provide critical cold water habitat for endangered salmon and steelhead trout. To support the designation of the three potential new wilderness areas in Humboldt Redwoods State Park, please write:

Joann Weiler, Project Manager  
California Dept. of Parks & Recreation  
Humboldt Redwoods State Park  
General Plan  
P.O. Box 942896  
Sacramento, CA 94296-0001

### **Activists sue to stop road in Ventana Wilderness**

Wilderness advocates filed a lawsuit on June 9 to stop the U.S. Forest Service from reopening a dirt road that bisects the Ventana Wilderness.

The 18-mile Indians Road twists above the Arroyo Seco River, which has a remnant population of the Salinas River steelhead trout, a threatened species. In winter 1995, heavy rains caused landslides that closed the road.

Until last summer, the road was locked closed. But the Kirk Complex Fire, which burned 85,000 acres in the Ventana Wilderness, created an emergency that enabled the Forest Service to bulldoze and rebuild the road for firefighting access—with no regard for where the landslide dirt landed.

While that emergency apparently cleared the way for reopening the road, the weather closed it in February, when rain caused a massive landslide.

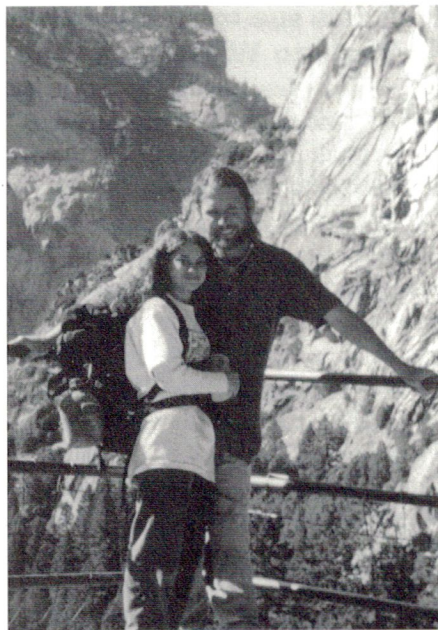
*Condensed from the SF Examiner.*

## Tina Andolina takes the campaign by storm

Since February, CWC has had the good fortune of working with a new conservation associate, Tina Andolina. Tina was hired to organize the Sierra Nevada foothills and Central Valley region for the CWC and the California Wild Heritage Campaign. Tina graduated from UC Davis in 1998 with a degree in political science. Prior to coming to work at CWC, she worked for Friends of the Trinity River and was an important team member in defeating the Auburn Dam proposal.

An avid hiker and kayaker, she also enjoys organic gardening and spending time with her husband, Darren.

Tina's enthusiasm, intelligence, grassroots organizing experience and sense of humor have already made her indispensable. Keep up the great work, Tina!



**Tina and Darren Andolina at Yosemite National Park**

## CWC takes to the field

This summer and fall, CWC is hiring several field staff to complete our statewide inventory of potential wilderness areas. We are proud to have hired Susan Nolan, who field-checked potential wilderness on the Shasta-Trinity National Forests for us last year. Susan is a very talented photographer and has excellent mapping skills. At press time, the CWC still had one field position available, a full-time position on the Los Padres National Forest. Interested applicants should contact Ryan Henson at (530) 474-4808 for more information.

## Comings and goings

CWC's Board of Directors is undergoing some changes. Celia Barotz, a long-time organization supporter, has resigned. Also, at its August meeting, the Board welcomed Sarah Davies as its newest member.

Celia has been a part of the CWC team for over three years. For the past year and a half, she has been an invaluable member of the board of directors, assisting with fundraising, program planning, and organizational development. Unfortunately for CWC, Celia is in the process of moving to Arizona, where she will pursue her consulting career. Her experience, professionalism, and dedication will be sorely missed.

Sarah Davies is the development director for Ecotrust, a visionary organization that seeks to establish a sustainable economy based on sound economic and environmental principles, in the Pacific Northwest. Sarah previously worked for the National Fish and Wildlife Foundation, where she assisted numerous hands-on conservation and restoration initiatives. Sarah is extremely

knowledgeable and passionate about environmental issues. Her experience and commitment will be a tremendous asset to CWC. Welcome, Sarah!

## Heartfelt thanks to summer's interns

CWC has been fortunate to have the help of five interns this summer. Michelle Early, a wildlife, fish & conservation biology major at UC Davis, has worked with conservation associate Chris Erichsen on California Wildlands Project issues. She has also provided hours of research assistance to CWC's editor.

Erica Hughes, a UCD biological sciences major with a minor in studio art, has drafted action alerts, analyzed maps, and reviewed environmental documents. Both Erica and intern Jessica Riggs have conducted many hours of research on off-road vehicle impacts upon public lands. Jessica, a junior in political science at UCD, is interested in environmental policy.

Jessie Smith, an environmental studies major at Sacramento State University, has assisted Tina Andolina in numerous tasks, including organizing a wilderness advocacy group in Sacramento. She has also conducted research and writing for the *Wilderness Record* (see pages 4 and 5). Jessie is interested in a career that would allow her to explore the intersection between science and communications.

Amanda Dranginis, a third year wildlife, fish & conservation biology major at UC Davis, will also be assisting CWC with research on off-road vehicle impacts on Bureau of Land Management lands.

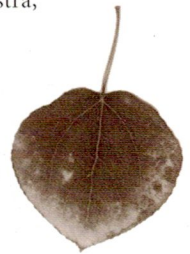
Many thanks to all five interns! We couldn't do it without you.

# B U S I N E S S S P O N S O R S

100fires  
Acorn Naturalists  
Agate Land & Water  
Ascent Technologies  
Mark Bagley, Consulting Biologist  
Knut Barde, Attorney at Law  
Berry & Associates,  
Marketing Productivity Consulting  
Bored Feet Publications  
Echo: The Wilderness Company, Inc.  
Ellison & Schneider, Attorneys  
Paul Gagner,  
Gregory Mountain Products  
Genny Smith Books  
Giselle's Travel  
William Gustafson, Attorney at Law  
Instant Replay Communications  
Bob Thompson, KiaTech, Inc.  
David B. Kelley, Soil Scientist

William M. Kier Associates  
Laughing Bear Press  
Madison Landscaping  
David Merion, Massage Therapist  
Mill Valley Plumbing  
Mountain Hardware  
Mountain Light Photography  
Jay B. Cohen,  
Neurohealth NLP Counseling  
James P. Pacht, Attorney at Law  
Patagonia, Inc.  
Peet's Coffee & Tea  
LaVerne Petersen Ireland,  
The Petervin Press  
James Engel, Pinnacle Fundraising Services  
Brian Hilden, Pre-Paid Legal Services  
Raven Maps  
Bob Rutemoeller,  
Certified Financial Planner

Drs. Helene & Rob Schaeffer,  
Psychological Corporation  
Michael Zanger,  
Shasta Mountain Guides  
Siskiyou Forestry Consultants  
Solano Press Books  
Patty & John Brissenden,  
Sorensen's Resort  
Richard Strohl, Certified Massage Therapist  
Kelly D. Moran, TDC Environmental  
Christopher P. Valle-Riestra,  
Attorney at Law  
Water Wise  
Weidert Biological  
Wild Iris Studio  
Wilderness Press  
Wilson's Eastside Sports  
Zoo-Ink Screen Print



# C O A L I T I O N M E M B E R G R O U P S

American Lands Alliance; Washington, D.C.  
Animal Protection Institute; Sacramento  
Ancient Forest International; Redway  
Angeles Chapter, Sierra Club; Los Angeles  
Backcountry Horsemen of Calif.; Springville  
Bay Chapter, Sierra Club; Oakland  
Bay Chapter Wilderness Subcommittee; S.F.  
Big Bear Group, Sierra Club; Big Bear Lake  
California Alpine Club; San Francisco  
Calif. League of Conserv. Voters; Oakland  
California Mule Deer Association; Lincoln  
California Native Plant Society; Sacramento  
Californians for Utah Wilderness; S.F.  
Center for Biological Diversity; Tucson, AZ  
Ctr for Sierra Nev. Conserv.; Georgetown  
Central Sierra Env. Res. Ctr; Twain Harte  
Citizens for Better Forestry; Hayfork  
Citizens for a Vehicle Free Nipomo Dunes  
Coast Rng. Ecosystem Alliance; Santa Clara  
Committee to Save the Kings River; Fresno  
Communication Works; San Francisco  
Desert Protective Council; Palm Springs  
Desert Subcomm., Sierra Club; San Diego  
Desert Survivors; Oakland  
Earth Justice Legal Defense Fund; S.F.  
Eastern Sierra Audubon Society; Bishop  
Ecology Center; Berkeley  
Ecology Center of Southern California; L.A.  
El Dorado Audubon Society; Long Beach  
Forests Forever; San Francisco  
Fresno Audubon Society; Fresno  
Friends of China Camp; San Rafael  
Friends of Chinquapin; Oakland  
Friends of Plumas Wilderness; Quincy  
Friends of the Garcia (FROG); Point Arena  
Friends of the Inyo; Lee Vining  
Friends of the River; Sacramento

Fund for Animals; San Francisco  
Golden Gate Audubon Society; Berkeley  
Great Old Broads for Wilderness; Salt Lake  
High Sierra Hikers Association; Truckee  
Idylwild Earth Fair; Idylwild  
International Ctr for Earth Concerns; Ojai  
John Muir Project; Pasadena  
Jumping Frog Research Inst.; Angels Camp  
Kaweah Flyfishers; Visalia  
Keep the Sespe Wild Committee; Ojai  
Kern Audubon Society; Bakersfield  
Kern-Kaweah Chp., Sierra Club; Bakersfield  
Klamath Forest Alliance; Etna  
Laguna Hills Audubon Society; Laguna Hills  
League to Save Lake Tahoe; S. Lake Tahoe  
LEGACY-The Landscape Connection; Arcata  
Loma Prieta Chapter, Sierra Club; Palo Alto  
Los Angeles Audubon Society; W. Hollywd.  
Los Padres Chp., Sierra Club; Santa Barbara  
Marin Conservation League; San Rafael  
Mariposa Democratic Club; Mariposa  
Mendocino Environmental Center; Ukiah  
Mono Lake Committee; Lee Vining  
Mother Lode Chp., Sierra Club; Sacramento  
Mt. Shasta Area Audubon Soc.; Mt. Shasta  
Mountain Lion Foundation; Sacramento  
Native Habitat; Woodside  
Natural Heritage Institute; San Francisco  
Natural Resources Defense Council; S.F.  
NCRCC Sierra Club; Santa Rosa  
Nordic Voice; Livermore  
Northcoast Environmental Center; Arcata  
People for Nipomo Dunes Nat'l Seashore  
Pew Wilderness Center; Boulder, CO  
Placer County Cons. Task Force; Newcastle  
Planning & Conserv. League; Sacramento  
Range of Light Group, Toiyabe Chapter,

Sierra Club; Mammoth Lakes  
Redwood Chapter, Sierra Club; Santa Rosa  
The Red Mountain Association; Leggett  
Resource Renewal Institute; San Francisco  
Sacramento Audubon Society; Sacramento  
San Bruno Mtns Grp., Sierra Club; Blue Jay  
San Diego Audubon Society; San Diego  
San Diego Chapter, Sierra Club; San Diego  
San Fernando Valley Audubon; Van Nuys  
Santa Clara Valley Audubon; Cupertino  
Save Our Ancient Forest Ecology; Modesto  
Sequoia Forest Alliance; Kernville  
Seven Generations Land Trust; Berkeley  
Seventh Generation Fund; Arcata  
Sierra Club California; San Francisco  
Sierra Nevada Alliance; South Lake Tahoe  
Sierra Treks; Ashland, OR  
Smith River Alliance; Trinidad  
Soda Mtn. Wilderness Council; Ashland, OR  
South Fork Mountain Defense; Weaverville  
S. Yuba River Citizens League; Nevada City  
Southern Calif. Forests Committee; Barstow  
Tulare County Audubon Society; Visalia  
Tule River Conservancy; Porterville  
U.C. Davis Envir. Law Society; Davis  
Ventana Wilderness Alliance; Santa Cruz  
Western States Endurance Run; S.F.  
Wilderness Land Trust; Carbondale, CO  
The Wilderness Society; San Francisco  
The Wildlands Project; Tucson, AZ  
Willits Environmental Center; Willits  
Wintu Audubon Society; Redding  
Yahi Group, Sierra Club; Chico  
Yolano Group, Sierra Club; Davis  
Yolo Audubon Society; Davis



### Board of Directors

#### President

Joan Reinhardt Reiss

#### Vice President

Trent Orr

#### Treasurer

Don Morrill

#### Secretary

Alan Carlton

#### Directors

Joan Boothe

Sarah Davies

John Davis

Jim Eaton

Ed Grumbine, Ph.D.

### Advisory Committee

Harriet Allen

Bob Barnes

David R. Brower

Joseph Fontaine

Frannie Hoover

Phillip Hyde

Sally Kabisch

Martin Litton

Norman B. Livermore, Jr.

Michael McCloskey

Julie McDonald

Tim McKay

Sally Miller

Lynn Ryan

Bob Schneider

Bernard Shanks

Bill Waid

Jay Watson

Thomas Winnett

**This bristlecone pine forest in the White Mountains potential wilderness area has existed for over 4000 years. With care and stewardship, our children and their children will continue to enjoy their company. Photograph courtesy of Galen Rowell, Mountain Light Photography.**

## M E M B E R S H I P

### A Humble Act

Protecting wilderness for future generations is a truly unselfish act. We do it for the planet and the wonderful variety of plants and animals that make it their home.

We also do it for ourselves. It is comforting to know as we deal with traffic, dirty beaches and polluted lands, that some of our most treasured lands remain pristine.

### Stocks

One effective way to help protect wilderness is through a donation of appreciated stock to the California Wilderness Coalition. You receive a tax deduction for the entire value of the stocks, though you may have purchased them for a small part of that value. (Please check with your tax advisor to clarify your exact tax benefits.) Let us know and we will work with you to do an electronic transfer of securities.

### Planned Giving

Remember wilderness in your will. Many of us cannot make day-to-day contributions to the causes we love; yet in our will, we can make a bequest to leave a wilderness legacy. Here's an example of language you might use in making a bequest:

*"to the California Wilderness Coalition, a non-profit organization organized and existing under the laws of the State of California with current address of 2655 Portage Bay East, Suite 5, Davis, CA 95616, for its general purposes."*

### Wildland Advocates

Make this commitment and join the over 110 members of our major donor program. We are entering the 21st century with a re-energized effort to protect California wilderness! This committed group empowers the staff and volunteers at CWC to be effective in our efforts to protect these lands. Our staff works hard with passion and modest pay, and appreciates knowing you care. You can give through our fund appeals, or sign up for a monthly credit charge. Your help is greatly appreciated. Giving levels for Wildland Advocates start at \$250 per year.

Please contact Bob Schneider at (530) 304-6215 if you have questions or suggestions about giving to protect our wilderness heritage.

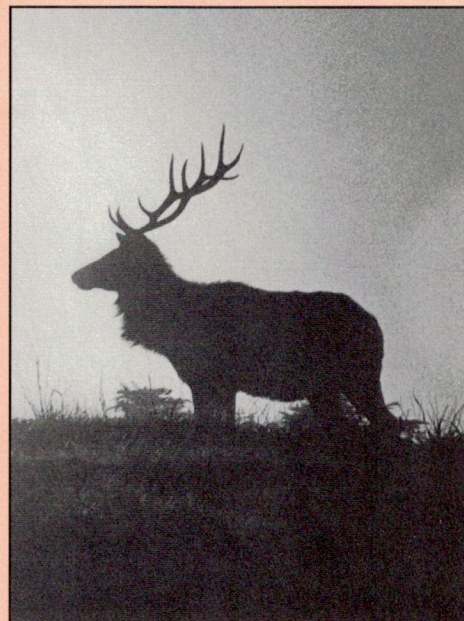


# California Wilderness Coalition's Autumn Fundraiser

Wednesday, November 15, 2000  
at Galen Rowell's Mountain Light Photography Studios  
1466 66th Street, Emeryville

Reception  
7:00 - 9:00 pm  
Special guests

Turning Point 2000:  
*The Growing California Wilderness Movement*



Mark J. Palmer

It has been a monumental year for California Wilderness. President Clinton has designated three new monuments in the state, including the Sequoia National Monument, and is poised to designate several others. The President is also proposing to set four million acres of pristine California wildlands off-limits to new roads. The first California Wilderness Conference in over a decade, combined with the growing Wild Heritage Campaign, is creating a resurgence in wilderness advocacy. We believe that the year 2000 will be looked back upon as the turning point for the California wilderness movement.

The suggested donation is \$50. Please join us in celebrating the growing tide of wilderness support in California.

## Join the California Wilderness Coalition TODAY!

Your membership includes a subscription to our quarterly journal, the *Wilderness Record*, action alerts to keep you informed, and the opportunity for direct participation in our campaigns.

- Enroll me as a new member of CWC. Enclosed is \$\_\_\_\_\_ for my first year membership dues.
- I am already a member. Here is a special contribution of \$\_\_\_\_\_ to help the Coalition's work.
- Contact me about volunteer opportunities.
- I would like to pledge \$\_\_\_\_\_ per month.

Method of payment:

- Check enclosed.
- Bill my  Visa;  MasterCard;  American Express.

Name \_\_\_\_\_

Gift from: \_\_\_\_\_

Address: \_\_\_\_\_

City/State/Zip \_\_\_\_\_

Credit card number \_\_\_\_\_

Expiration date \_\_\_\_\_

Signature \_\_\_\_\_

- \$500 Wilderness Defender
- \$250 Wilderness Supporter
- \$100 Benefactor
- \$50 Business Sponsor
- \$50 Sustaining
- \$30 Non-profit
- \$30 Individual
- \$10 Low-income

Please mail to: California Wilderness Coalition, 2655 Portage Bay East #5, Davis, California 95616.

f/00/wr

Tim Palmer



Sharp changes in topography create a wide variety of niches in which a diversity of species can flourish. The most extreme gradient in the state can be found in eastern California, where within 80 miles, elevations descend from 14,494 feet at the summit of Mt. Whitney to 282 feet below sea level at Bad Water in Death Valley. Pictured here: the view south from Mt. Whitney. For more on the state of California's species, see pages 4 and 5.

*A Voice for Wild California*



*California Wilderness Coalition*  
*2655 Portage Bay East, Suite 5*  
*Davis, California 95616*  
*CHANGE SERVICE REQUESTED*

Non-Profit Org.  
U.S. Postage  
PAID  
Davis, CA  
Permit No. 34

611  
Mr. Phil Farrell

