



WILDERNESS RECORD

Proceedings of the California Wilderness Coalition

September 1998

What's left after all these years?

California Roadless Area Report takes stock of potential wilderness

By Danielle Weintraub

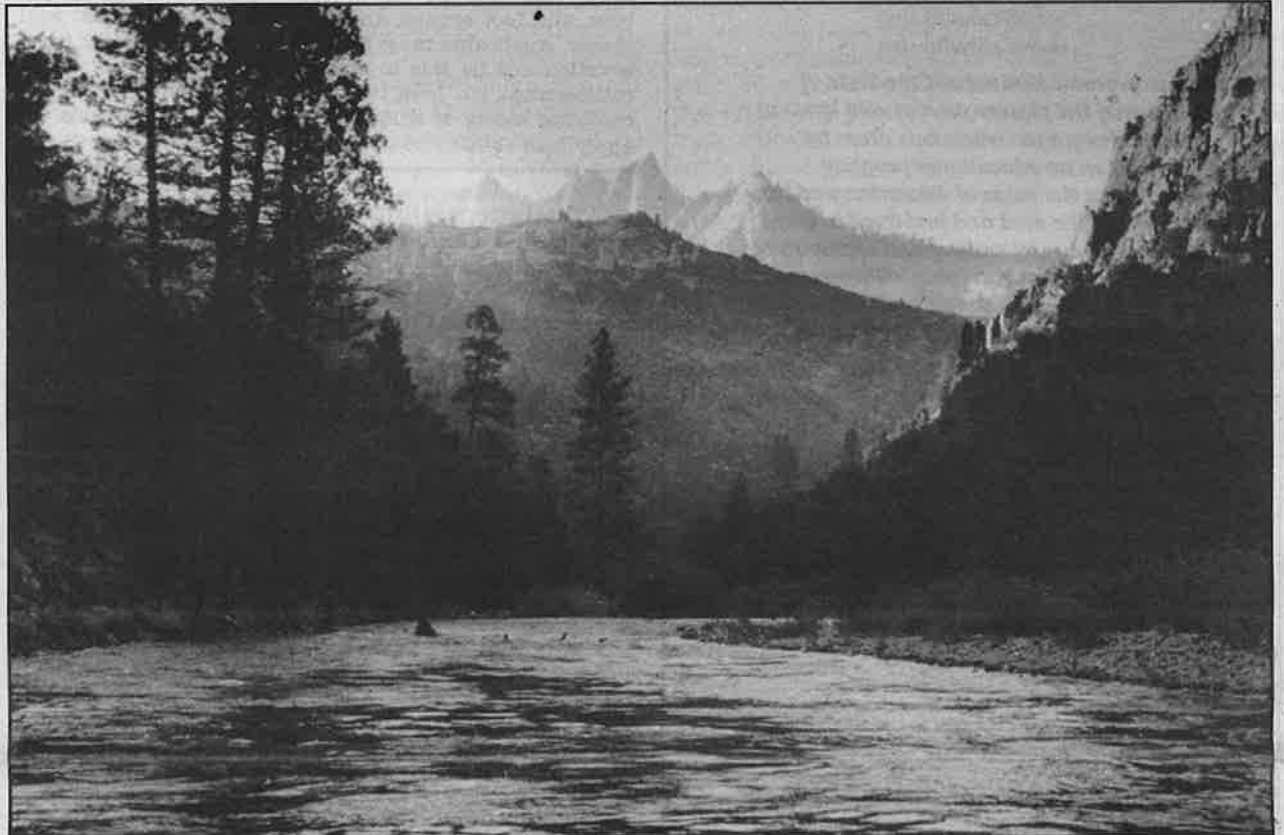
Where have all the roadless areas gone and how do we stop their increasingly rapid vanishing acts? Unfortunately, many have been lost to mining, road construction, and logging. How much of California's potential wilderness has been lost—and how much is still pristine—will be revealed by CWC's soon-to-be-released California roadless area report.

The last time such an inventory was conducted on roadless lands in the state of California was the Roadless Area Review and Evaluation (RARE II) in 1979. Since then, numerous activities have occurred on RARE II lands which make us question their title as "roadless areas." Now, over twenty years later, the California roadless area report will determine the current amount of roadless land left within the national forests of California, describe their current condition, and look at the direction the Forest Service is managing these areas.

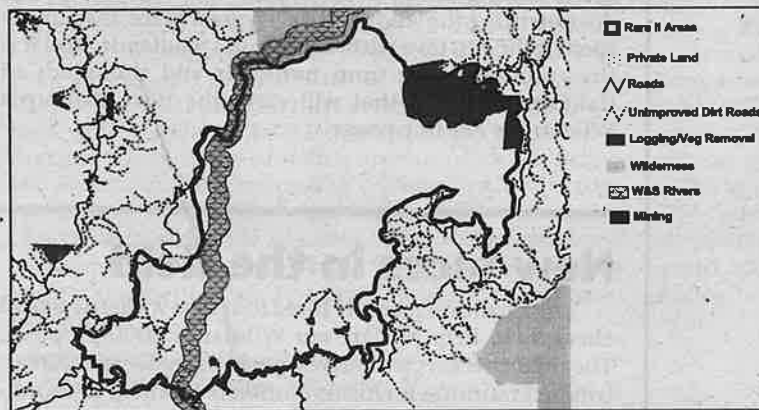
These last roadless areas, as well as designated wilderness, supply the remaining healthy havens for all forms of wildlife. The only way to ensure that threatened species stay off the endangered species list, and those already on the list escape extinction, is to keep intact the ecosystems they depend on.

In addition to valuable wildlife habitat, pristine forests also provide necessary clean water and recreation opportunities for humans. Future generations must know what a roadless area is. Wilderness designation is the best way to ensure that these areas maintain their wild and pristine nature.

The roadless area report will help achieve these goals. First, we will determine the condition of the remaining areas, and secondly, we will use this information to



Above: The Wild and Scenic North Fork Kern River winds its way through the Rincon Roadless Area in the Sequoia National Forest. Photo by Bob Barnes.



Left: A map of the Rincon Roadless Area as it will appear in the California roadless area report. Our analysis shows that logging, mining and minor road intrusions have reduced this potential wilderness area by over ten percent. Map by Danielle Weintraub.

convince policy makers that urgent attention is needed for these forests and advocate for their long-term protection as designated wilderness. The report will be completed in early October. Call CWC for a copy or a (much shorter) executive summary.

Danielle Weintraub is coordinating the California Roadless Area Report. For more information call her or Paul Spittler at (530) 758-0380.

California Wilderness Coalition
2655 Portage Bay East, Suite 5
Davis, CA 95616
CHANGE SERVICE REQUESTED

Phil Farrell



Non-Profit Org.
U.S. Postage
PAID
Davis, CA
Permit No. 34

In this issue:

- Trouble in the Modoc, Legislation.....3**
- Leave No Trace.....4**
- A wilderness grunt tells all.....5**
- Biodiversity opportunities in the Central Coast.....6**



California Wilderness Coalition

2655 Portage Bay East, Suite 5
Davis, California 95616
(530) 758-0380
Fax (530) 758-0382
info@calwild.org
www.calwild.org

...to promote throughout the State of California the preservation of wild lands as legally designated wilderness areas by carrying on an educational program concerning the value of wilderness and how it may best be used and preserved in the public interest, by making and encouraging scientific studies concerning wilderness, and by enlisting public interest and cooperation in protecting existing or potential wilderness areas.

Board of Directors

Mary Scoonover, *President*
Trent Orr, *Vice President*
Don Morrill, *Treasurer*
Steve Evans, *Secretary*
Bob Barnes
Alan Carlton
Wendy Cohen
John Davis
Sally Miller
Joan Reiss
Jil Zilligen

Staff

Executive Director
Paul Spitler, paul@calwild.org
Conservation Associate
Ryan Henson, ryan@calwild.org
Editor
Herb Walker, hwalker@calwild.org
Membership and Development Associate
Jane King, janeking@calwild.org
California Wildlands Project Coordinator
Rich Hunter, rich@calwild.org
Wildlands 2000 Coordinator
Celia Barotz, celia@calwild.org
Roadless Area Report Coordinator
Danielle Weintraub
Wilderness Field Checkers
Graham Freeman
Nate Greenberg
Laura Kinsvater
Ceal Klingler
Robert Lonsdorf
Leah Mahan

Wilderness Record

Volume 23, Number 9
ISSN 0194-3030

The *Wilderness Record* is published monthly by the California Wilderness Coalition. Articles do not necessarily reflect the views of the Coalition. Articles may be reprinted with permission from the editor.

Submissions on California wilderness and related subjects are welcome. The deadline for submissions is the 15th of each month. We reserve the right to edit all work.

Editor
Herb Walker

Writers
Nate Greenberg
Ryan Henson
Rich Hunter
Danielle Weintraub

Photos & Graphics
Bob Barnes
Rich Hunter
Danielle Weintraub

Printed by the Davis Enterprise
on recycled paper.

Coalition News

Director's Report

Help Wanted

Wilderness Field Checkers

Citizens needed to field check California potential wilderness areas. Spend entire days or weeks travelling by car, bike, and foot around and through California's last wild places. Applicants must be committed to wilderness preservation and be able to endure blazing sun, brushfields, rattlesnakes, etc. Long hours. No pay. Benefits include an enduring legacy of wilderness for future generations. To apply, call (530) 758-0380

What better way to pass time in summer than tromping around wild California, falling in love with her wild places while laying a foundation for their permanent protection? Dozens of Californians are spending their summer doing just that, as a part of the Wildlands 2000 campaign.

Through Wildlands 2000, CWC, along with many Coalition member organizations, is working to permanently protect hundreds of parcels of California wildlands, totaling over five million acres. As a part of this campaign, we need citizens to get out on the ground and look at each of these areas—to look for roads, mines, clearcuts, and other impacts that aren't compatible with wilderness protection. We'll use the information gained from the field to further refine our wilderness proposal.

The work isn't easy. It involves hour after hour of driving along dusty roads, hiking in 105 degree heat, chalking up another area as lost to reckless logging or off-road vehicle use. It is physically and emotionally draining and seeing California's last wild places being slowly eaten away by development takes its toll on the psyche.

But the rewards are great. For every minute you spend hiking along a potential wilderness boundary, documenting the wildness of each great place, is a minute spent falling in love with California's wildlands. And it is the combined love from hundreds and thousands of California citizens that will carry the next California Wilderness Act to passage.

New faces in the field

The Coalition recently hired four new wilderness field checkers to help prepare our Wildlands 2000 proposal. The field checkers will survey potential wilderness areas, conduct trainings for local volunteers and help to coordinate volunteer activities in their regions. They'll be a great help in drafting our wilderness proposal.

Robert Lonsdorf will be checking out potential wilderness in the Tahoe National Forest, including the spectacular North Fork American Roadless Area. The North Fork American contains some of the healthiest intact ancient forest in the northern Sierra. It should be a good place for Robert to explore.

Laura Kinsvater will be working in the Eldorado National Forest. Laura has been a committed CWC volunteer for the past two years and has helped fend off numerous reckless logging proposals. Now she'll be helping to permanently protect the Eldorado's best wild places.

Leah Mahan will be working in the Plumas National Forest where she grew up. Leah is one of the founders of the Lassen Forest Preservation Group in Chico. She has spent years roaming the Lassen and Plumas National Forests and has worked tirelessly for their protection. Her enthusiasm and knowledge of the forests will be a tremendous asset to the campaign.

Few national forests in California contain as much unprotected wildlands as the Sequoia National Forest in the southern Sierra Nevada. Graham Freeman will have

So, grab your boots wilderness lovers, because we need you. California's potential wilderness awaits. Come spend a few days with us in the field and become enamored with all the wilderness California has to offer. Join us in our efforts to create a legacy of wilderness that will endure forever. It is an experience you'll never forget.

Remembering Ernie Dickerman

The American wilderness movement lost a hero last month. Ernie Dickerman, the tireless advocate who fought to protect America's wild places for over six decades, committed suicide at his home in Virginia on August 1.

Ernie Dickerman assisted in the founding of The Wilderness Society back in 1936. Since that time, he has taken part in, or led, countless campaigns to protect wild places. He fought hard for the creation Great Smoky Mountain National Park in Tennessee, and was a chief proponent of the Wilderness Act of 1964. Based in part on Ernie's efforts, the National Wilderness Preservation System now protects over 100 million acres of American wildlands. Ernie's legacy will live on.

I had the pleasure of meeting Ernie at a conference in Arizona earlier this year. The meeting brought together older wilderness advocates, the people who had fought and won battles in the 60s 70s and 80s, with the new generation of activists. Ernie spoke to the youngsters (who, to him, was anyone under 60) about the philosophy of wilderness protection, about making our case to Congress and the American people, and about campaigning to win. His sage advice and gentle demeanor left myself and most of the other attendees awestruck. My enduring memory will not be of Ernie's incredible list of accomplishments, but of his enduring smile and everlasting warmth.

Long time wilderness advocate Doug Scott once said that the wilderness protection movement is not a sprint but a relay race. If this is true, and I believe that it is, Ernie has just passed the baton. I hope that my generation can carry it forward with all the passion, conviction, and vigor that Ernie did for over 60 years. So long Ernie, we'll miss you.

By Paul Spitler

the responsibility (opportunity is more like it!) to map hundreds of thousands of acres of potential wilderness in the Sequoia. Graham will be spending days and nights in the field, and will be visiting some of California's most precious unprotected wildlands.

Thanks to the Pew Charitable Trusts and the Sierra Nevada Forest Protection Campaign for their assistance in hiring Robert, Laura, Leah, and Graham, and for their commitment to wilderness in the Sierra Nevada. Give a call at the Coalition office if you'd like to spend a day or two in the field with any of our new field checkers.

Thanks to interns, friends

The Coalition's two newest interns, Kevin English and Sulakshana Singh, have been doing a great job assisting in the Coalition's Davis headquarters. Kevin has been helping to edit the California roadless area report (which should be out in early October). Sulakshana has also been helping with the report, and has been a tremendous help around the office. Kevin and Sulakshana join long term intern Joshua De Wolfe, who is working on the Wildlands 2000 campaign from the Coalition's satellite office in San Francisco. Thanks Joshua, Sulakshana and Kevin. We couldn't do it without you!

Next-door neighbor, Certified Massage Therapist, wilderness lover and new business sponsor Richard Strohl has generously been treating our over-stressed staff to complementary massages. Our bodies, minds and spirits thank you, Richard!

Wilderness News

Fear and logging in the Modoc Plateau

By Ryan Henson

The Modoc National Forest, in the northeastern corner of California, is a hard place to be a tree. First, the climate and soil do not always promote healthy and vigorous growth. Second, this forest has a very long history of logging, most of it occurring before the area came under federal ownership. For these reasons, old-growth forests (and even individual large trees) are hard to find in the Modoc.

Despite this, the Modoc National Forest continues to log ancient trees. For example, the proposed Diaz Timber Sale will destroy over 952 trees 30 inches and larger in diameter. Some of the trees are true giants according to Forest Service staff. Here, even an eighteen-inch tree may be quite old. While a few Forest Service officials would like to see the Diaz Timber Sale cancelled, several factors are preventing them.

First, all attempts to modify or cancel the sale have been met by strong protests from local timber industry officials. In addition, according to Forest Service officials, the Big Valley Lumber Company is currently gathering data regarding the number and nature of timber sales that have been approved in the Big Valley Ranger District over the last few years. Ironically, this information may be used as evidence of the Modoc's supposed reluctance to sell public trees despite the many fights the forest has had with the conservation community in the 1990s.

The second reason for the difficulty of canceling the Diaz timber sale and similar projects is the Forest Service's desperate need for revenue. The agency has already sustained several rounds of lay-offs, and since Congress has tied much of the Forest Service's budget to the logging program, the more they log the more jobs they can sustain—at a huge loss to the federal treasury as a whole.

The third reason is more complicated. Situated in a remote part of California, the Modoc National Forest is far from any large cities and, as a consequence, receives few visitors compared to other national forests in the state. To make matters worse, many of those who live there fight any effort to protect it. With few exceptions, those who do live in the region and care about the forest are frightened of "coming out" as conservationists and facing the wrath of the local powers-that-be. When CWC attempted to recruit new activists in the area, many people showed up at our meetings, but not one person was willing to let others in the community know of their interest in public land management.

The Forest Service mirrors the community at large. Many Forest Service staff care about the forest and work hard to protect and restore it. Sadly, they labor under

continued on page 7

Legislative Roundup

Interior Appropriations bill

A \$13.4 billion appropriations bill to fund the Department of the Interior and related agencies has been saddled with a host of riders—the vast majority seeking rollbacks and intrusions on existing protections for public lands and wildlife. The bill has drawn a storm of criticism from conservation groups, citizens and legislators due to the volume and scope of the attachments that riddle this spending measure. Below are a few of the riders which have been added to the bill.

• Delay of pending BLM mining regulations.

Interior Secretary Bruce Babbitt's new hardrock mining regulations are currently undergoing an environmental review. This rider would halt the review until the National Academy of Sciences finishes an 18-month study of the effects of the new regulations, delaying much-needed mining reform.

• Interfering with the EPA's plans to reduce air pollution in national parks.

This rider would establish commissions aimed at creating regional approaches to air pollution in national parks and wilderness areas. However, this could delay the EPA's rulemaking efforts to clear the air. The Clean Air Act requires that the EPA issue a rule that assures reasonable progress in reducing air pollution.

• Waiver of environmental review for grazing permits

This rider would allow the BLM to reauthorize grazing permits while circumventing currently required environmental review for specific grazing allotments.

• Izembek National Wildlife Refuge Road.

This rider would authorize the construction of a \$30 million, 30-mile gravel road through this critical wildlife refuge and wilderness. All applicable environmental laws would be disregarded. This proposal, the first new and permanent road through a Congressionally-designated wilderness area, would set a chilling precedent for the entire National Wilderness Preservation System. It is strongly opposed by a diverse coalition and has drawn a veto threat from the White House.

• Halt to review of national forest planning

This rider would stop the revision of any new forest plans not currently in progress until final or interim final regulations are adopted. This rider could cause the approval of forest plans which are based on earlier, inadequate draft rules, instead of the latest available recommendations from scientists.

• Encouraging logging through prescribed burning.

This rider would require that "economically viable,

commercial wood products" be removed prior to prescribed burning in national forests. The result would be the logging of older, more fire-resistant trees with the highest dollar value. Behind would be left the smaller, more flammable trees, thereby undermining the very restoration work for which the prescribed burning was intended.

• Stopping the decommissioning of national forest system roads

Prohibits funds to be used to decommission or fix national forest system roads until all "unauthorized" roads are decommissioned or fixed. "System" roads include logging and fire roads, while "unauthorized" roads include less harmful ones such as temporary roads or off-road vehicle routes. Conducting an inventory of unauthorized roads, many of which are not recorded, delays the Forest Service's addressing of the most destructive system roads. This rider would undermine the current efforts to overhaul the national forest road system and decommission the worst roads, many of which cause habitat fragmentation, destructive mudslides and harm water quality.

• Emphasis on human activity in wilderness areas

The 1964 Wilderness Act partly defines wilderness as a place that has "outstanding opportunities for solitude or a primitive and unconfined type of recreation." This rider would shift emphasis in wilderness management away from the quality of solitude toward human activity and recreational use. It would abolish quotas in wilderness areas when these limits are based upon achieving solitude.

Anti-riders amendments

Several Senators have offered amendments to the Interior spending bill that would strip certain anti-environmental riders from the bill.

Meanwhile, Representative Henry Waxman (D-CA) has introduced a bill (H.R. 1404) to allow a separate vote on environmental riders attached to widely-supported bills.

Amendment to protect forest roadless areas

An amendment to the Interior bill offered by Senator Richard Bryan (D-NV) would protect important roadless areas and redirect taxpayer dollars earmarked for logging and associated roadbuilding to conservation efforts. The amendment would prohibit for one year the funding of logging and road construction in roadless areas in national forests.

The estimated \$32 million savings from the amendment would be split evenly between taxpayers

and restoration efforts in national forests. The American Lands Alliance said the amendment is necessary since subsidized logging and roadbuilding have destroyed wildlife and fish habitat, polluted rivers and streams and diminished recreation opportunities in public forests. For most of this decade, the group said, the federal timber program has lost hundreds of millions of dollars each year. The General Accounting Office recently reported that the Forest Service timber program lost nearly \$1 billion between 1992-1994 alone.

Kempthorne's Species Extinction bill

In a whirlwind of political maneuvering, Senator Dirk Kempthorne (R-ID) made an attempt to add his Endangered Species Act (ESA) reauthorization bill as a rider to the Interior spending bill. Shortly afterward, that attempt was dropped in favor of an effort to jockey the bill (S. 1180) into a position to be voted on as a stand-alone bill. This "sneak attack" to pass legislation gutting the ESA is an attempt to catch the conservation community off guard and pass this controversial legislation with little notice.



What you can do

1) Call Senators Barbara Boxer and Dianne Feinstein immediately urging their opposition to Kempthorne's ESA bill (S. 1180) in whatever form it may end up (either as a rider, standalone bill or whatever).

2) Call Senators Barbara Boxer and Dianne Feinstein today and urge them to support any amendments that strip anti-environmental riders, including amendments by Senators Baucus (D-MT), Bryan (D-NV), Boxer (D-CA), Lautenberg (D-NJ) and others.

3) Urge your Senators to vote against the Interior Appropriations bill unless all anti-environmental riders are removed from the bill.

The Capital Switchboard number is (202) 224-3121

4) Call the White House and urge President Clinton to veto every appropriations bill that contains anti-environmental riders. Make sure the White House opposes the Kempthorne anti-ESA rider/bill. Remind the President of his multiple promises to veto the Interior Appropriations bill and remind him of his Statement of Administration Policy regarding the Interior Appropriations bill.

The White House Comment Line is (202) 456-1111

Sources: Natural Resources Defense Council, GrassRoots Environmental Effectiveness Network and American Lands Alliance.

Wilderness Ethics

Leave No Trace

By Nate Greenberg

Hiking into the Emigrant Wilderness is an amazing experience. Huge pieces of granite are scattered amidst towering pines and blankets of shrubbery. As the trail winds up the canyon, the views grow wider and more spectacular. This is why I love this place: pristine mountain lakes and unspoiled views. But as I near the shores of Camp Lake, one of the closest and most popular destinations for short backpacking trips in the Emigrant, I begin to see the effects of human presence.

As a former wilderness ranger in the Emigrant Wilderness, this sight is, unfortunately, all too common for me. Like the many other people I know who travel into wilderness areas, I do so for the serenity and solitude of pristine nature. But as backpacking becomes increasingly popular, and wilderness visitation is a growing trend, the impacts also continue to mount. As conscientious and concerned wilderness visitors, however, we have the ability—and responsibility, to ensure that we are not leaving behind evidence that we have visited this place. The best way to do so is to learn and practice Leave No Trace ethics.

"Leave No Trace" is a set of practices based on the philosophy that we leave the wilderness in a pristine state—the same way that we found it, or in some cases better. It strives to dilute the effects of humans in the backcountry by teaching new ways to camp and hike, allowing visitors to minimize their impact without compromising their wilderness experience. By practicing Leave No Trace, and by teaching others to do so, we can keep our wilderness areas pristine and allow other visitors to feel as though they too are entering into a truly wild place.

Leave No Trace is simple. However, the principles have no value if your heart is not in the right place. Anyone can learn Leave No Trace, but it is the true love for the wild that establishes the difference between faithfully practicing or not.

The following are the six basic principles of Leave No Trace, and brief summaries about each of them.

1. Plan Ahead and Prepare

This principle serves as the fundamental element allowing for Leave No Trace to work. Planning for a trip in which you intend to Leave No Trace will better prepare you for the actual endeavor, in addition to ensuring the safety of yourself and others. In your planning it is important to consider elements such as weather, skill of participants on trip, knowledge of the area, quality of equipment, anticipated food consumption, and group size. Having a better understanding of these elements will better prepare you for the situation into which you are entering, and hopefully prevent adverse impacts resulting from a lack of preparation.

2. Travel and Camp on Durable Surfaces

When hiking in heavily impacted or highly used areas, it is important to concentrate your activity as much as possible, keeping your party on the established trail. When travelling off-trail with a group, spread out so that you do not create new paths or trails. Although you may wish to find a spot "off the beaten path" when camping in a high use area, it is best to use established campsites which show signs of previous human use so as not to create new ones. In a pristine area, or an area that does not see much use, try to find an out of the way site that will not be found by other visitors, and pay close attention to the paths you take to and from the site so that they do not become obvious to other visitors. Surfaces such as rock, gravel, sand, ice, and snow are the most durable, and are ideal camping and travelling surfaces. Whereas on vegetation, cryptobiotic crust or desert puddles, hiking and

Keeping the backcountry safe from ourselves



Lead wilderness ranger Tyler Henner (front) and volunteer Darius DaMonte carry out a pail, grills, cans and cooking utensils left behind by careless campers. Photo by Nate Greenberg.

camping can cause serious damage and create a tremendous impact.

3. Pack It In, Pack It Out

This is a well known and fairly well understood principle. However, it is often not applied on a broad enough scale. The principle applies most directly to litter, and simplifying the amount of "Packing It Out" you do can come from careful menu planning. Bringing in foods that do not have a lot of waste, or removing wrappers from food before packing it in will reduce the amount of litter you create in the wilderness. Pack It Out, whenever possible, should be extended to toilet paper and even human waste.

4. Properly Dispose of What You Can't Pack Out

Human waste is the most common item that is not packed out, so it is very important that it is disposed of properly. All human waste should be disposed of at least 200 feet (about 70 adult steps) away from any water or water source. In high-use areas it is important to bury feces in a "cathole" 6 to 8 inches deep in an inconspicuous area that would not likely be used by another individual. Feces breaks down faster when not buried; however, unless you are in an area that doesn't see much use, or where your bathroom site would *never* be found, the cathole method is recommended. Only in certain instances, such as when camping with children or when staying at a camp for multiple days, is it wise to dig a latrine, with the same criteria used for a cathole. Always pack out tampons and sanitary napkins. It is best to not use toilet paper (use natural material in place of paper), but when necessary, toilet paper should be used sparingly and packed out.

5. Leave What You Find

By leaving discovered objects such as rocks, plants and artifacts, you allow others to discover them as you did. Similarly, it is important to minimize campsite alterations. When such alterations are necessary, be sure to replace moved objects or soil to their original locations.

6. Minimize Use and Impact of Fire

Campfires were once used for cooking in the backcountry, as they were the easiest source for cooking heat and warmth. However, camping and backpacking stoves today are readily available, relatively cheap, and much more efficient for cooking. Still, at times fires are enjoyable, or even necessary. Before building them though, it is important to consider the consequences of doing so, such as whether the fire would cause damage to the backcountry, whether there is a sufficient amount of wood so as to not cause a noticeable impact, and whether there are any administrative restrictions from doing so. When a fire is built, it is best to use an existing fire ring. If one does not exist, use a "fire-blanket," so that the ashes can be easily contained and spread after the fire has been extinguished.

These are the most basic principles of the Leave No Trace ethic, and can be applied virtually anywhere. It is important to realize, however, that although the principles are the same, the methods by which they are practiced differ from place to place. Certain managing agencies also require or suggest additional practices which help them keep the backcountry clean. Some examples are: the requirement of packing out human waste on

continued on page 7

Wildlands 2000

Wildlands 2000: A wilderness grunt's first-hand account

By Ryan Henson

Wildlands 2000, the California conservation community's campaign to protect as many of the Golden State's pristine wild lands as possible, required the arduous task of identifying which areas to evaluate for their wilderness potential. It was both a trying and exhilarating experience.

The first step in the process involved tentatively identifying potential wilderness areas on Forest Service and Bureau of Land Management (BLM) maps. That was the easy part, since it essentially consisted of drawing lines around all major roads.

The problem with ending the process at that point was twofold. First, a truly comprehensive road map has never been produced for any national forest in California. The most accurate road maps are Forest Service transportation maps, but even these are missing many roads. In addition to roads, other kinds of destruction can also rob an area of its wilderness qualities. Mines, off-road vehicle use, logging, reservoir development, and a host of other activities can devastate an area and make it a poor candidate for wilderness protection (but perhaps an excellent candidate for restoration). These disturbances can often stray far from the edges of roads. As with roads, no comprehensive maps exist showing the location and extent of such disturbances.

To correct this problem, we decided to use four-inch-to-a-mile color aerial photographs. For Forest Service lands, these photos are taken every five years. These photos show our public lands with warts and all. While the public often cannot see clearcuts and other disturbances because of Forest Service aesthetic restrictions along major roads (called "beauty strips"), the agency can hide few of its shameful secrets from the air.

On average, checking aerial photos for each national forest required up to four working days to complete. Since the photos for the various national forests are housed at the headquarters of each forest, I spent over 34 days surveying photos in such communities as Clovis, Eureka, Alturas, and others to finish the thirteen national forests the CWC chose to survey (BLM wild lands will be surveyed in fall, while other forests in California do not require surveys).

Aerial photo inspection is an extremely tedious and difficult task, particularly if one does it in a virtual 34-day marathon session as I did. After the twelfth day I developed a violent tic in my right eye which my doctor attributed to eyestrain and stress. The most stressful part of the task was seeing how our national forests have been hacked apart at taxpayer expense. For people who care about wild land, these photos are extremely painful to behold.

On the other hand, the photos of pristine country were a pleasure to look at. Since the photos are arranged south to north in vertical strips across each national forest, my heart would leap at the first photo of an undisturbed landscape, and I found myself rooting for the wildness to continue as I moved north. Depending on the results, every now and

then I would let out a low cheer or a muffled "damn." This caused a few Forest Service heads to turn in my direction on more than one occasion. Perhaps I was just getting maudlin from the tedious nature of the work, but after awhile I started to see the photos of undisturbed wild land as poetry. One could read nature's verse in every creek, atop every ridge, and in every uninterrupted stretch of oak savanna, ancient forest or alpine meadow. When a clearcut, road or stripmine marred the photo, it was as though some illiterate had thoughtlessly ripped parts of the page away.

The aerial photo surveys revealed some interesting facts. First, despite Forest Service claims to the contrary, many of the wild areas the agency said were destroyed still exist. In addition, every national forest I surveyed had both a few wild areas never identified before, as well as substantial additions to wild areas the environmental community already knew about. What was most exciting about the survey is that after years of struggling with anecdotal information, inaccurate maps, agency falsehoods, and other unreliable data we finally had real, substantive information about what is wild and what is not in thirteen of California's national forests.

This does not mean, of course, that the aerial photo survey process is perfect. In addition to human error (especially with the tic in my right eye) there were many problems that decreased the reliability of the photos. Subtle disturbances were sometimes difficult to distinguish from natural landscapes, especially on rocky ground or in naturally sparse forest. In other areas, all the aerial photos were missing due to poor record keeping, or because timber sales were being planned in those wild areas. Despite these problems, the aerial photo review process saved a great deal of time by revealing what is worth examining out in the woods, and what is not.

After I completed the surveys, CWC staff and volunteers transferred the aerial photo information on to topographic maps in a process almost as difficult as the aerial photo surveys.

The most enjoyable aspect of the Wildlands 2000 campaign for me has been "field-checking," the process we use to determine whether the wild areas identified in the aerial photo surveys are truly wild. The protocol involves using the topographic maps mentioned above to patrol the tentative wilderness boundaries and either expand, contract, or affirm those boundaries.

Most of the areas I've field-checked thus far have held up to scrutiny and are excellent candidates for

wilderness. The Grindstone proposed wilderness in the Mendocino National Forest, for example, is simply a joy to behold. The region is so steep and wild that only a few four-wheel drive routes intrude into its pristine fastness.

While logging and other destructive activities have intruded somewhat into the area (catastrophically in a few places), it remains a very large tract of wild land worth field-checking, visiting, fighting for, and protecting. While field-checking this area in late-August, CWC staffer Graham Freeman and I saw oaks with trunks eighty inches in diameter, giant pines and Douglas fir, abundant native bunch grass, and bear scat so large we thought it belonged to a cow.

One of the most important field-checking tasks is surveying vehicle routes and assessing whether they should be included in a proposed wilderness. The CWC's protocol requires that we exclude from wilderness vehicle routes that are regularly maintained for the passage of standard passenger vehicles. Open routes that are not maintained but are still

driveable by standard vehicles are also usually excluded. Thus far, approximately 85 percent of the vehicle routes I've surveyed are not regularly maintained, nor are they driveable. In the Grindstone proposed wilderness, Graham and I searched in vain for a route that was on at least two maps and appeared to be significant. After over an hour of looking, we finally found it—collapsed into a creek and completely overgrown on the other side. Someone had placed a log across the creek so that people could hike across. Even that "trail" disappeared after a few hundred feet. Needless to say, we did not place the route in the driveable category. It had been reclaimed by wilderness.

Not all field-checking experiences end in victories for wilderness. As we ended our day at Grindstone, we neared the headwaters of Grindstone Creek where the forest becomes thicker and the clearcuts are more common. At one point I had to use binoculars and my best judgement to determine whether we could squeeze any wilderness at all out of a portion of Grindstone Creek canyon where clearcuts hem it in on both sides. We finally settled on a pathetic quarter-mile wide corridor of wilderness through the upper canyon. However sad it is that we have been reduced to such slim pickings in a few areas, it is heartening to know that even a quart-mile corridor of pristine forest could serve as the seedbed of recovery for a much larger region.

Someday, I look forward to enjoying the satisfaction that comes with knowing that I played a role in protecting much of California's remaining wild lands. Like Marge Sill, Jim Eaton, Tim McKay, Joe Fontaine and the many other conservationists who can look at a map and say, "I drew that wilderness boundary," I look forward to visiting places that I know are safe from development, in part, through my efforts. This satisfaction should make the smell of the pines that much more fragrant, the taste of the water that much sweeter, and the flowers that much brighter.

Get in on the fun and make your mark on California conservation history by joining the Wildlands 2000 effort. Volunteers are especially needed for the field-checking effort. It is hard work, but the legacy you help leave behind is something you will never forget. Call Celia Barotz at (415) 221-5229 for details.

Ryan Henson is the Conservation Associate for CWC. Rested from a vacation, the tic in his eye has subsided.

Perhaps I was just getting maudlin from the tedious nature of the work, but after awhile I started to see the photos of undisturbed wild land as poetry. One could read nature's verse in every creek, atop every ridge, and in every uninterrupted stretch of oak savanna, ancient forest or alpine meadow.

The Wildlands Project

A wild sanctuary near the urbanized Silicon Valley: Castle Rock State Park wilderness proposal

By Rich Hunter

The steep redwood canyon of upper San Lorenzo creek, carrying coast range sediments from the ridge of the Santa Cruz mountains to the Pacific, holds its own human and natural history. These stories are told not only by the tongues of humans, but also in the languages of animals, plants, rocks, moss, and springs. The upper canyon and its adjacent folds in the ridge are now known as Castle Rock State Park (Castle Rock SP). Teeming with life, this land is a wild haven for marbled murrelets, red-legged frogs, Cooper's hawks, and humans seeking refuge from the urban jungle of Silicon Valley.

A general plan process, led by the California Department of Parks and Recreation (DPR), promises to set the direction for the evolving histories of this land. People will talk, posture, and squabble about the direction of park management. Current proposals would develop large paved parking lots, car camping, and visitor facilities adjacent to the most wild part of the park. Attempting to "improve" the park for visitors, the proposals threaten the very beauty, ruggedness, and diversity that make this park a special place. Can DPR manage not to destroy the colorful histories that entice thousands of visitors a year?

But the challenge to DPR is greater: listen to the voices of non-humans and decipher their languages—they have long since become foreign to us and to our decision making processes. Learn their wonderful stories. Reflect on them and consult with the council of all beings before deciding what contribution to make to the stories not yet told.

For there are two silent voices in the current process: the animals, plants, rocks, water, and air with which we share this planet, and the children of the next generation. What do we owe to those who will search and yearn for wildness in the Santa Cruz mountains one hundred years from now? Our debt to these people is growing with each clearcut, strip mine, housing development, or water diversion. Every option we save for the future repays that deficit.

Many argue "the park is for people" to justify the degradation of natural values. However, state code says parks exist "to preserve outstanding natural, scenic, and cultural values, indigenous aquatic and terrestrial fauna and flora, and the most significant examples of such ecological regions of California as ... low coastal mountains..." Clearly, this charge summons a Leopold land ethic of protecting and nourishing nature. Some politicians concerned with balanced budgets have targeted DPR, and budget bills for the last few years have been filled with incentives for DPR to fund itself by encouraging fee-based recreation in state parks. Many feel a small fee is reasonable, but the allure of collecting money also encourages development of "facilities" within the park.

However, development is directly discouraged in the state park system's purpose statement: "Improvements may be undertaken to provide for recreation opportunities ... so long as improvements involve no major modification of lands, forests or waters. *Improvements which do not directly enhance the public's enjoyment of the natural, scenic, cultural, or ecological values of the resource, which are attractions in themselves, or which are otherwise avail-*

able to the public within a reasonable distance outside the park shall not be undertaken within state parks" (emphasis added).

"The public" uses a wide variety of activities to enjoy natural, scenic, cultural, and ecological values, including car camping and ORV riding. Unfortunately, these recreational activities can displace other forms of nature enjoyment, as well as damage the values themselves. "This conflict should not be mitigated by divvying up a small—but significant—park like Castle Rock," says Bruce Bettencourt, coordinator for Friends of Castle Rock State Park. "Each park cannot be everything to everyone. A vast majority of public feedback, including climbers and mountain bikers, shows clear support for wilderness protection. We want it to stay a wild refuge for wildlife and humans."

Sensitive species such as marbled murrelet, pallid bat, peregrin falcon, and ringtail cat account for some of the non-human public in Castle Rock SP. Viable populations of these animals and the pristine vegetative communities they inhabit translate to the "values" mentioned in park system's purpose statement. The preliminary general plan proposal would directly eliminate natural areas,

fragment habitat required by wide-ranging species, and degrade the wilderness experience of visitors.

Bettencourt and Barry Boulton, with the Loma Prieta Chapter of the Sierra Club, have been suggesting a regional view of recreation opportunities and ecological context. Boulton says, "There is no justification for the cookie-cutter approach that maximizes the number of people and machines up to and into sensitive areas of every park. For Castle Rock, its uniquely precious characteristic is that it offers a near-wilderness experience just minutes from Silicon Valley. It takes only minutes to reach the park, but if you want to experience it, you have to get out of your machine and actually walk—then you can experience the quietness and tranquility of near-wilderness. But often more importantly, the park should be managed to nurture the natural processes that occur within it."

A regional view of Castle Rock SP reveals that any remaining wildlands must be sensitively managed to protect natural and ecological values. Considering the existing fragmentation and urban growth in the region, all wildlands here are significant. The diversity of habitats

continued on next page



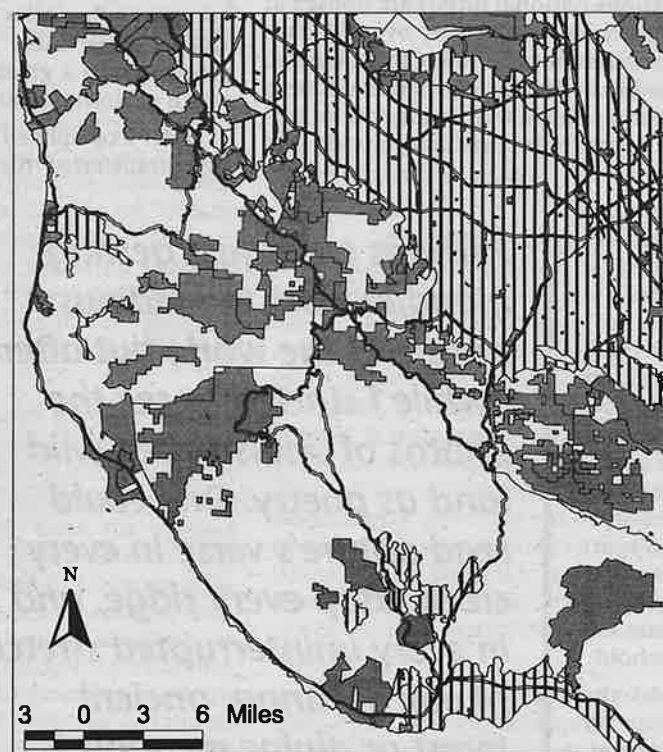
Mapping for biodiversity: alliance to craft vision for Central Coast

Ventana Wildlands Project

In August, the California Wilderness Coalition formed an alliance with the Ventana Wildlands Group and the Santa Cruz Mountains Wildlands Recovery Project. The alliance is mapping a system of core areas, buffers, and linkages that provide for wide-ranging species, ecosystem representation, and natural processes in the Central Coast. Based on current information, we will create a map of the reserve network to communicate the vision to others. Vision mapping will identify and cultivate new partners and members of the alliance. With these new relationships, we hope to work toward a more site-specific analysis with involvement from diverse interests.

An initial look at a study of the proportion of ecosystem types currently represented in reserves revealed that achieving our vision will be difficult. Roughly twenty percent of the region is publicly owned, and less than ten percent is protected. Population growth will add to the large urban areas already present. The region also holds valuable agricultural lands; indeed, many of the unurbanized valleys are fertile fields of vegetables. These factors only heighten the importance of the wilderness proposal for Castle Rock State Park.

Castle Rock State Park Landscape Context



Locator map

Major Roads

Protected land

Urban Area

County line

Source Data:

GreenInfo Network
UCSB GAP

The Santa Cruz Mountains are the only remaining wildlands on the San Francisco peninsula. Very few wilderness areas are designated in low coastal mountains, yet they have central importance in a reserve network to protect biodiversity. The general plan must consider landscape connectivity in planning for the future of Castle Rock State Park's 3,800 acres. Map by Rich Hunter.

Wilderness News

Modoc National Forest

Continued from page 3

constant pressure from their not-so-enlightened colleagues. Others are caught in the common bind of holding their noses and participating in destruction so that they can keep their jobs and continue to live in picturesque northeastern California. Like many of us from time to time, they assuage their guilt by thinking, "It would have been much worse if I hadn't been involved."

The complicated cultural dynamics of the Modoc Plateau stand out in stark contrast to the basic beauty of the land. Despite the region's lip-splitting winter cold and summer heat, many plants and animals call the area home. Pronghorn ply the vast plains and sagebrush flats, and both northern and California spotted owls dwell in remnant ancient forest. From the azure waters of Medicine Lake to the stark ruggedness of the South Warner Wilderness, the Modoc National Forest holds many natural treasures that deserve to be protected and, if necessary, restored where they have been tarnished.

The restoration and preservation effort has been hampered by the Modoc National Forest's location: it is neither in the Sierra Nevada nor the Pacific Northwest. Both of these regions have seen substantial reductions in logging pressure due to concerns over dwindling ancient forest (symbolized by the plight of the California spotted owl in the Sierra Nevada and the northern spotted owl in the Pacific Northwest). Though a few portions of the national forest have these owls, the vast majority of the forest does not. Thus, the forest has become a sacrifice

area where the normal rules do not apply and the "old-fashioned" logging methods of the 1970s and 1980s continue to be used. The good news is that the Forest Service's latest attempt to develop a long-range management strategy for the forests of the Sierra Nevada will include the entire Modoc National Forest despite the geographic stretch involved. Predictably, anti-conservationists in Modoc County were quick to condemn the Forest Service's decision to include the forest in the plan. For example, the *Northern California Traveler* complained that the Modoc National Forest is not in the Sierra and should be left out. This geographic literalism completely ignores the many ecological attributes and concerns shared by the Modoc Plateau and the Sierra Nevada.

Until the Forest Service's long-term conservation strategy for ancient forest management is in place, the Diaz timber sale and similar projects will continue to move forward. In the meantime, California Wilderness Coalition, Sierra Nevada Forest Protection Campaign, Klamath Forest Alliance, The Wilderness Society, and other groups plan to increase their vigilance over this "forgotten forest." Significantly, CWC staff have tentatively identified several new potential wilderness areas in the forest and will be aggressively seeking to protect them permanently in the National Wilderness Preservation System.

The only long-term solution for the Modoc National Forest's troubles is for more Californians to care about this forest and resolve to protect it. The *Wilderness Record* will keep you abreast of ways to get involved.

Ryan Henson is the Conservation Associate for CWC.

Leave No Trace

Continued from page 4

Mount Shasta, fire restrictions above 9,000 feet in many high-altitude wilderness areas of the Sierra Nevada, and the recommendation for the use of bear-proof food canisters in Yosemite National Park and the Inyo National Forest.

Ultimately, it is your choice whether to believe in and practice Leave No Trace, and the motivation needs to come from your love for the natural world. If you believe in keeping wilderness wild, then learning and practicing these principles is a tremendous step toward preserving these fantastic places.

For more information regarding Leave No Trace ethics and practices, you can contact:

Central/Southern Sierra Wilderness Education Project
Barb Miranda

P.O. Box 577
Yosemite, CA 95389
(209)372-0735

Leave No Trace, Inc.
P.O. Box 997
Boulder, CO 80306
(303)442-8222

Leave No Trace
c/o National Outdoor Leadership School
288 Main Street
Lander, WY 82520
1-800-332-4100
<http://www.lnt.org>

You can also contact the local office of any land managing agency.

Nate Greenberg, a former wilderness ranger for the Emigrant Wilderness, works for CWC as a wilderness field checker.

The Wildlands Project: Castle Rock State Park

Continued from previous page

found in the park is essential for the unity of the peninsular ecosystem. Neotropical migratory songbirds nest in the largest patch of black oak woodland in the Santa Cruz mountains. Near the southern edge of their range, marbled murrelets may inhabit the old-growth redwood groves of King's Creek. This population would depend upon the ancient grove as one of only a handful in the entire region. Long-term population viability for the small population of mountain lions in the region depends upon large areas of protected land.

DPR's preliminary proposals will fragment a large tract of protected land by constructing new parking lots and buildings. At the same time, taxpayers, private corporations, and open space trusts are spending millions of dollars to enlarge and connect these reserves with land protected from development. A look at the accompanying map illustrates why Castle Rock SP is a critical core reserve to protect biodiversity.

Friends of Castle Rock State Park, Earth First!, Sierra Club, California Wilderness Coalition, Santa Clara Audubon Society, and others have proposed state wilderness designation for Castle Rock SP and submitted a position paper to DPR. The Castle Rock SP General Plan Draft Environmental Impact Report will be released in October. As one of the first planning processes in a new format created last year, Castle Rock SP offers a chance to set direction for many upcoming general plans. Call Rich Hunter at (530) 758-0380 if you want to learn more or can help.

Aldo Leopold, in his *Sand County Almanac*, writes, "We abuse land because we regard it as a commodity belonging to us. When we see land as a community to which we belong, we may begin to use it with love and respect." How do we choose to enter this landscape? Is it as a visitor, one who does not remain, or as an oppressor with bulldozers and concrete? A wilderness designation

California Wilderness Coalition Annual Fundraiser

Please join:

Barbara Boyle	Jerry Mander
Mayor Jerry Brown	Buck Parker
David Brower	Carl Pope
Senator Alan Cranston	Johanna Wald
Jim Eaton	David Rains Wallace
Representative Anna Eshoo	Jay Thomas Watson
Randy Hayes	Ed Wayburn
	Representative Lynn Woolsey

in honoring the California Wilderness Coalition.

Thursday, October 1, 1998
Patagonia, 770 North Point, San Francisco

Reception
7:00-9:00 PM

◇ Wine. Hors d'oeuvres.
◇ Featuring food from Zuni Cafe and other fine Bay Area restaurants and wineries
◇ Silent Auction

Featuring a special slideshow and presentation by world-class climber Rick Ridgeway.

Admission \$75
All proceeds benefit the California Wilderness Coalition

Position Available

Executive Director: The Klamath Forest Alliance (KFA), a community-based forest, water and salmon protection organization, seeks a dedicated, hard-working individual to fill the position of Executive Director beginning on or after January 1, 1999. Based in rural Siskiyou County, California, KFA seeks protection for Klamath-Siskiyou Wildlands via public land reserves, reform of public and private resource management and ecosystem restoration. Salary range \$33,800 to \$41,600. Health benefits. For application contact KFA at P.O. Box 820, Etna, CA 96027, (530) 467-5405, klamath@sisqtel.net. Deadline October 30, 1998.

Attention!

The Wildlands Photo Contest deadline has been extended until October 31, 1998.

Keep sending us your favorite shots of California's wild, wonderful places.

Call (530) 758-0380 or e-mail
info@calwild.org for details.

will bring the human community into the watershed as stewards, where we and our children may hear the language of animals and rediscover the interrelationships of life on Earth.

Rich Hunter is the California Wildlands Project Coordinator for CWC.

Coalition Member Groups

American Lands Alliance; Washington, D.C. Ancient Forest Defense Fund; Leggett Angeles Chapter, Sierra Club; Los Angeles Back Country Horsemen of CA; Springville Bay Chapter, Sierra Club; Oakland Bay Chapter Wilderness Subcommittee; S.F. California Alpine Club; San Francisco California Mule Deer Association; Lincoln California Native Plant Society; Sacramento Center for Sierra Nevada Conservation; Georgetown
 Citizens for Better Forestry; Hayfork
 Citizens for Mojave National Park; Barstow
 Citizens for a Vehicle Free Nipomo Dunes; Nipomo
 Committee to Save the Kings River; Fresno
 Conservation Call; Santa Rosa
 Davis Audubon Society; Davis
 Desert Protective Council; Palm Springs
 Desert Subcommittee, Sierra Club; San Diego
 Desert Survivors; Oakland
 Earth Justice Legal Defense Fund; S. F.
 Eastern Sierra Audubon Society; Bishop
 Ecology Center; Berkeley
 Ecology Center of Southern California; L.A.
 El Dorado Audubon Society; Long Beach
 Fresno Audubon Society; Fresno
 Friends of Chinquapin, Oakland
 Friends of Plumas Wilderness; Quincy
 Friends of the Garcia (FROG); Point Arena
 Friends of the Inyo; Lee Vining
 Friends of the River; Sacramento
 Fund for Animals; San Francisco
 Golden Gate Audubon Society; Berkeley

Hands Off Wild Lands! (HOWL); Davis
 High Sierra Hikers Association; Truckee
 International Center for Earth Concerns; Ojai
 John Muir Project/Earth Island Institute; Pasadena
 Kaweah Flyfishers; Visalia
 Keep the Sespe Wild Committee; Ojai
 Kern Audubon Society; Bakersfield
 Kern River Valley Audubon Society; Bakersfield
 Kern-Kaweah Chapter, Sierra Club; Bakersfield
 Klamath Forest Alliance; Etna
 League to Save Lake Tahoe; South Lake Tahoe
 LEGACY-The Landscape Connection; Arcata

Loma Prieta Chapter, Sierra Club; Palo Alto
 Los Angeles Audubon Society, West Hollywood
 Los Padres Chapter, Sierra Club
 Marble Mountain Audubon Society; Etna
 Marin Conservation League; San Rafael
 Mendocino Environmental Center; Ukiah
 Mendocino Forest Watch; Willits
 Mono Lake Committee; Lee Vining
 Mother Lode Chapter, Sierra Club; Sacramento
 Mt. Shasta Area Audubon Society; Mt. Shasta
 Mountain Lion Foundation; Sacramento
 Native Habitat; Woodside
 Natural Heritage Institute, San Francisco
 Natural Resources Defense Council; S.F.
 NCRCC Sierra Club; Santa Rosa
 Nordic Voice; Livermore

Northcoast Environmental Center; Arcata
 People for Nipomo Dunes Nat'l. Seashore; Nipomo
 Peppermint Alert; Porterville
 Placer County Cons. Task Force; Newcastle
 Planning & Conservation League; Sac.
 Range of Light Group, Toiyabe Chapter, Sierra Club; Mammoth Lakes
 Redwood Chapter, Sierra Club; Santa Rosa
 The Red Mountain Association; Leggett
 Resource Renewal Institute; San Francisco
 San Diego Audubon Society; San Diego
 San Diego Chapter, Sierra Club; San Diego
 San Fernando Valley Audubon Society; Van Nuys
 Save Our Ancient Forest Ecology (SAFE); Modesto
 Sequoia Forest Alliance; Kernville
 Seven Generations Land Trust; Berkeley
 Seventh Generation Fund; Arcata
 Sierra Nevada Alliance; South Lake Tahoe
 Sierra Treks; Ashland, OR
 Smith River Alliance; Trinidad
 Soda Mtn. Wilderness Council; Ashland, OR
 South Fork Mountain Defense; Weaverville
 South Yuba River Citizens League; Nevada City
 Tulare County Audubon Society; Visalia
 Tule River Conservancy; Porterville
 U.C. Davis Environmental Law Society; Davis
 Ventana Wildlands Group; Santa Cruz
 Western States Endurance Run; S. F.
 The Wilderness Land Trust; Carbondale, CO
 The Wilderness Society; San Francisco
 Wintu Audubon Society; Redding
 Yahi Group, Sierra Club; Chico
 Yolano Group, Sierra Club; Davis
 Yolo Environmental Resource Center; Davis

"The environmental Nazis treat national parks as their own personal property and want the millions of other taxpayers who pay for these parks to be treated as interlopers, who are being kept out if possible, and admitted if necessary only if they conform to the vision of the environmental Nazis."

—Thomas Sowell, a senior fellow at Stanford University's Hoover Institute, in his "Of 'fairness,' liberals, and environmental Nazis", *Atlanta Journal*, July 31, 1998.

CWC Business Sponsors

Acorn Naturalists
 Env. Education Resources
 17300 E. 17th, J-236
 Tustin, CA 92680

Ascent Technologies
 Robert J. Rajewski
 525 Avis Dr., Suite 15
 Ann Arbor, MI 48108

Mark Bagley
 Consulting Biologist
 P. O. Box 1431
 Bishop, CA 93514

Knut Barde
 Attorney at Law
 384 North Hockett Street
 Porterville, CA 93257

Berry & Associates
 Marketing Productivity
 Consulting
 Three Deer Creek
 Irvine, CA 92604

Ellison & Schneider, Attorneys
 2015 H Street
 Sacramento, CA 95814

Genny Smith Books
 P.O. Box 1060
 Mammoth Lakes, CA 93546

Giselles Travel
 101 El Camino Plaza
 Sacramento, CA 95815

William Gustafson
 Attorney at Law
 1570 The Alameda, #150
 San Jose, CA 95126

Instant Replay Communications
 224 Quatro Vecchio
 Pacific Palisades, CA 90272

David B. Kelley,
 Consulting Soil Scientist
 2655 Portage Bay East
 Davis, CA 95616

William M. Kier Associates
 207 Second St., Ste. B
 Sausalito, CA 94965

Laughing Bear Press
 72025 Hill Road
 Covelo, CA 95428

Madison Landscaping
 124 Russell
 Winters, CA 95694

Mill Valley Plumbing
 P. O. Box 1037
 Sausalito, CA 94966-1037

Don Morris,
 Environmental Design
 P. O. Box 1551
 Willits, CA 95490

Neurohealth Counseling
 Jay B. Cohen
 537 Newport Ctr. Dr., #440
 Newport Beach, CA 92660

James P. Pacht
 Attorney at Law
 80 Grand Ave., Sixth Floor
 Oakland, CA 94612

Patagonia, Inc.
 259 W. Santa Clara St.
 Ventura, CA 9300

Peet's Coffee & Tea
 P.O. Box 12509
 Berkeley, CA 94712

Peet's Coffee & Tea Employees
 1411 W. Covell Blvd
 Davis, CA 95616

LaVerne Petersen Ireland
 The Petervin Press
 P.O. Box 1749
 Morgan Hill, CA 95038

Pinnacle Fundraising Services
 James Engel
 P.O. Box 38
 Lytle Creek, CA 92358

Pre-paid Legal Services
 Brian Hilden, Ind. Agent
 1037 Foster City Blvd.
 Foster City, CA 94404

Ridge Builders Group
 129 C Street
 Davis, CA 95616

Bob Rutemoeller, CFP, EA
 Certified Financial Planner
 P.O. Box 587
 Gualala, CA 95445

Drs. Helene & Rob Schaeffer
 Psychological Corporation
 225 West Granger
 Modesto, CA 95350

Siskiyou Forestry Consultants
 P.O. Box 241
 Arcata, CA 95521

Sorensen's Resort
 Patty & John Brissenden
 14255 State Route 88
 Hope Valley, CA 96120

Richard Strohl
 Certified Massage Therapist
 2655 Portage Bay East, Suite 8
 Davis, CA 95616

Christopher P. Valle-Riestra
 Attorney at Law
 725 Washington St., Ste. 200
 Oakland, CA 94607

Water Wise
 P.O. Box 45
 Davis, CA 95616

Wild Iris Studio
 116 Kosland Way
 Santa Cruz, CA 95064

Wilderness Press
 2440 Bancroft Way
 Berkeley, CA 94704

Wilson's Eastside Sports
 James Wilson
 206 North Main
 Bishop, CA 93514

Zoo-Ink Screen Print
 707 Army Street
 San Francisco, CA 94124

Join the Coalition

Yes! I wish to become a member of the California Wilderness Coalition. Enclosed is \$ _____ for first-year membership dues.

Here is a special contribution of \$ _____ to help the Coalition's work.

NAME _____

ADDRESS _____

CITY _____ STATE _____ ZIP _____

Annual Dues: †

Individual	\$ 25
Low-income Individual	\$ 10
Sustaining Individual	\$ 40
Benefactor	\$ 100
Patron	\$ 500
Non-profit Organization	\$ 30
Business Sponsor	\$ 50

† tax deductible

Mail to:
 California Wilderness Coalition
 2655 Portage Bay East, Suite 5
 Davis, California 95616

T-Shirt Orders

1. *landscape design* in light blue, pale green, jade, or fuchsia: \$15
2. *animal design* in beige (no med.) or gray: \$12
3. *logo design* in jade, royal blue, birch, or cream: \$15

Design Size(s, m, l, xl) Color Amount

Subtotal _____

Shipping _____

(\$1.50 + .75 for each additional shirt)

Total _____